

SARGENT COLLECTION

1913

H. A. Sternberg.

Dumelle.

Ill.

J. A. Strunk.

Apr. 24 - 1936.

PLATE I.



21



22



23



24



101



25



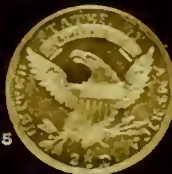
69



84



85



86



86



871



886



SARGENT COLLECTION.

CATALOG
OF THE
COLLECTION
OF
GOLD, SILVER & COPPER
COINS
OF THE
UNITED STATES

OF
Arthur Sargent, Esq.
Boston

Cataloged by
S. H. CHAPMAN
and to be sold at auction
By **S. T. Freeman & Co., Auctioneers**
AT THE ROOM OF
S. H. CHAPMAN
1047 Drexel Building
Philadelphia

Friday, June 20, at 1.30 P. M.
1913

ORDERS WILL BE EXECUTED AT THE USUAL COMMISSION OF 10%.

PREFACE.

Mr. Arthur Sargent has been for a long time a collector of U. S. coins, but during recent years has spent much time in Europe, where he expects still to reside for sometime to come, and has, therefore, concluded to dispose of his collection, which will be found described in this catalog. It contains a few U. S. gold coins, fine eagle of 1795, exquisite quarter eagles of 1807, 1830 and 1831, and in the \$3 the extremely rare 1877 is the most important, and a complete series of U. S. Dollars except 1804 and some splendid Pattern Dollars in proof condition, the 1836, 1838, 1839, 1865 with the motto "IN GOD WE TRUST"; 1870's by Longacre and Barber; 1871 by Longacre; 1872 Commercial by Longacre, and two very rare varieties of 1878 by Morgan; and a splendid collection of Cents, many in extraordinary condition and with a great series of Cents of 1794 including a new reverse die and two varieties unknown to Hays and a new combination unpublished; uncirculated specimens of 1795, 1796, 1797, 1798, an excellent 1799, uncirculated specimens of 1800, 2, 3, 1809, 1821, 1823 perfect date, of which last only one other specimen is known in this preservation, etc.

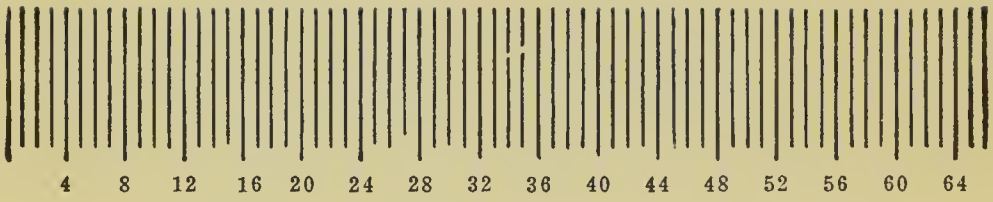
I have arranged nine plates, first containing the gold coins; second, the Massachusetts pieces, 1794 Dollar, 1851 and 2, 1836, 8 and 9 Dollars; six plates of the Cents which will make the plate catalog a most valuable and important one to the collector of Cents, and a plate of the rare Pattern Dollars. I place the price at \$2 per copy, which is only the cost of the prints, not including anything for the cost of the making of the plates. Priced catalog, 50c.

Under the Proprietary gold coins I have placed my unique H. Schaeffer California Pattern piece, the only specimen known from the dies of which no impression in gold is known. I guarantee all the coins genuine and original.

Respectfully,

S. H. CHAPMAN,
Numismatist.

SCALE.



CATALOG

COINS OF THE COLONIES.

- 10-1 Massachusetts. Oak tree. 1652. Shilling. Rev. tops of the letters w ENGL are off. Unc. Full weight, 72 grs. V. rare. C. No. 3, Pl. VIII, No. 8. See Plate.
- C (54C) 2-2 Massachusetts. 1662. Oak tree. Two Pence. Very fine. Wt. 12½ grs. C. A-1.
- Elder 3.10 3 Massachusetts. Pine tree. 1652. Shilling. Large type with small tree. Fine, but numerous small dents, and cleft in edge. Extraordinarily over weight, 72⅞ grs. C. 12. Rev. I.
- 4C 4-4 Massachusetts. Pine tree. 1652. Sixpence. Upper part off as always. Fine. Clipped. Wt. 31½ grs. *Brink 3.75*
- Elder .50 5 Virginia. George III. Head r. Rev. Shield. Unc. Red.
- Beck .25 6 Massachusetts. 1787, 1788 Cent, Half Cent. Good. 3 pcs. *Beck .25*
- Elder .15 7 Massachusetts. 1788. Cent. Very good. *Count .22*
- Ryder 2.10 8 Connecticut. 1785. Negro bust r. Very fine and evenly struck. Broad planchet. C. 4-F.
- Count .15 9 Connecticut. 1785, 6, 7. Different scarce varieties. Very good. *Beck .05*
4 pcs. *Count .16*
- HC .10 10 New Jersey. 1786. M. 23-P. V. f. Lt. olive. 1787. M. 32-T. V. good. 1788. M. 78-dd. Damaged. 4 pcs. *Beck .05*
- Johne .55 11 (1812-15) Ship with U. S. flag sailing r. Rev. SHIPS, COLONIES & COMMERCE.

WASHINGTON COINS.

PATTERNS FOR U. S. COINS.

- HC .30 12 1783 WASHINGTON & INDEPENDENCE Bust l. laur. draped. Rev. UNITED STATES. Liberty seated. Fine. Scratch on head.
- .70 13 1783 Similar. Rev. UNITY STATES. ONE CENT in center. Fine.

- HC .75 14 No date. WASHINGTON. Military bust l. Rev. ONE CENT. Same bust l. V. f. Light olive.
- HC 380 15 1791 WASHINGTON PRESIDENT. Bust in uniform l. Rev. ONE CENT. Large heraldic eagle. Edge lettered. Proof surface. Beautiful light olive with traces of red. C. 1-A. *act 2.*
- HC 210 16 1791 Similar without date. Rev. Small heraldic eagle above which stars and clouds, below date. Very fine. Slightly bruised on edge.
- HC .50 17 1793 Liverpool Half Penny. Same obv. Rev. HALF PENNY. Ship sailing r. below 1793. Fine.
- 1- 18 (1791) GEORGE WASHINGTON. Similar bust to l. Rev. LIBERTY AND SECURITY. Coat of Arms of Washington. Edge lettered AN ASYLUM FOR THE OPPRESSED OF ALL NATIONS. 2 Cent or penny. Fine. Size 21.
- .70 19 1795 Bust in uniform to r. Rev. Same, 1795. Edge lettered "London, Liverpool or Bristol." S. 18½.
- C 1- 20 1795 Grate Cent. Bust r. Rev. Fire-grate. Clark and Harris, etc. Unc. Partly red.
- HC 1.40 20a Brass Card counter. Large bust r. Rev. SUCCESS TO THE UNITED STATES. Glory of rays between which thirteen stars. Brass. Fine. Boston. 1638. ANCIENT AND HONORABLE ARTILLERY. Button, old, engraved. Fine. 2 pcs. *6-21-15*

GOLD.

EAGLES.

- C 24- 21 1795 Bust of Liberty r., draped, with cap; above, LIBERTY, beneath, 1795; 10 stars behind and 5 before head. Rev. UNITED STATES OF AMERICA. Eagle standing on palm branch bears wreath of laurel. Die in which Rev. Eagle's wing touches R and leaf of laurel touches U. Same die as the Wilson plate, catalog No. 2. Fine. Small dent in field to r. of 5. Plate. *chief 20.*

- im* 13-22 1799 Small stars. Fine. 5 small dents on head. *im 12.00*
Ref 16-23 1801 Very fine. *Chief 15.*
Ref 15-24 1803 Fine. Drapery and 4 stars r. and 4 stars to l.
 not struck up. *Chief 15*

HALF EAGLES.

- C* 17-25 1795 Same type as the Eagle. Close, crowded date.
547 Top of the 5 extending up on the truncation
 through the deep line and drapery. Lower right
 point of star touches top of cap. Rev. Opening of
 wreath under left side of O. Fine. Rare. Plate. *Chief 12.50*
Ref 8-26 1800 Rev. Heraldic Eagle. Begun in 1798. V. f.
 Minute dent on breast of eagle. *Chief 7.50*
HC 82527 1804 Crossed 4. Die broken on edge over TY. Rev.
 Eagle's claw touches foot of A. Very fine. *Ref 7.50*
HC 6.75 28 1806 Knob 6. Extremely fine. Mint lustre.
Cal 8-29 1808 Bust to l. Begun in 1807. Rev. Eagle bearing
 shield on breast; above on scroll E PLURIBUS UNUM.
 Fine. *Cal 9.*
Ref 7.50 30 1810 Large date. Extremely f. Mint lustre. Sharp. *Chief 7.50*
Ref 6.50 31 1811 Rev. Small 5. Fine. Slightly bent. *Chief 7.50*
Ref 7-32 1812 Rev. Small 5 D. Very fine. *Chief 7.50*
2 2.50 33 1813 Head of Liberty l. undraped, wearing large,
547 soft cap, top of which falls over, on band LIBERTY,
 around, 13 stars and date. Rev. similar. Uncircu-
 lated. Mint lustre. Sharp.

QUARTER EAGLES.

- 10-34* 1807 Very fine. Mint lustre.
14-35 1830 Head to l. wearing soft cap. Rev. UNITED *alarm 12.*
 STATES OF AMERICA. Eagle bearing shield on breast *Brink 3.75*
 and holding laurel branch and arrow in talon; *Chief 10.*
 above, E PLURIBUS UNUM on scroll; below 2½ D.
 Uncirculated. Proof surface. A gem.
547 14-36 1831 Uncirc. Proof surface. Gem. Very rare. *alarm 12.*
16-37 1831 Same condition. Gem. Very rare. *alarm 12.*
Chief 15.

THREE DOLLARS.

- C 4- 38 1854 UNITED STATES OF AMERICA. Head of Liberty to l., wearing Indian head-dress, on edge of which LIBERTY. REV. 3 DOLLARS 1854, within wreath. Unc. Mint lustre. New Orleans Mint. Fine. Scarce.
- HC 2.75 39 1855 Fine.
- Bat 5- 40 1856 Uncirculated. Mint lustre. *Bat 5. Coast 4.*
- C (SHC) 4- 41 1856 San Francisco. Large S. Very good.
- C (SHC) 4- 42 1856 San Francisco. Small S. Fine.
- 2.50 43 1857 Very good. Nick under ear.
- C (SHC) 8- 44 1858 Very fine. Small nick on edge. Rare, only 2,113 struck. *Coast 5.*
- Brink 4.11 45 1860 Very fine. *Brink 3.75 Coast 3.50*
- HC 3.60 46 1860 San Francisco Mint. Very good. Rare.
- 4.50 47 1863 Very fine. Scarce.
- C (SHC) 6- 48 1864 Very fine. Rare, only 2,660 coined.
- 10- 49 1867 Extremely f. Proof surface. V. rare. Only 2,670 coined. *Coast 9. Coast 5.*
- C (SHC) 4- 50 1868 Extremely f. Mint lustre. Rare, only 4,875 coined. *Brink 3.75*
- Brink 4- 51 1870 Fine. Scarce. *Brink 3.75*
- Brink 5- 52 1871 Fine. Rare, only 1,330 coined. *Brink 5.10*
- Coast 5- 53 1872 V. f. Proof surface. Rare, only 2,003 struck. *Brink 5.24 Coast 1.*
- Walker 3.25 54 1874 Good. Loop removed.
- C (SHC) 3.75 55 1878 Uncirculated. Mint lustre.
- 4.00 56 1877 Extremely f. Proof surface. V. rare. *Bat 7.5. Coast 5.0.*
- 4.30 57 1879 Uncirculated. Proof surface. Scarce.
- 4.40 58 1880 Uncirculated. Proof surface. Scarce.
- Coast 5- 59 1882 Brilliant proof. Rare, only 1,540 coined for circulation. *Coast 5.*
- Bat 7- 60 1886 Brilliant proof. Rare. 11,420 coined. *Bat 6.5. Mint 2.0. Coast 1.*
- 3.70 61 1888 Very fine.
- C (SHC) 4- 62 1889 Extremely f. Microscopic nicks on throat.
- Last year.

GOLD DOLLARS.

C (SHC)	2.30	63	1849	Head of Liberty 1., surrounded by 13 stars. Rev. UNITED STATES OF AMERICA; 1 DOLLAR 1849, within wreath. Size 8. First year of issue. Ex- tremely f. Die cracked from berry across 1 to right end of wreath.
C (SHC)	2.35	64	1851	Very fine.
C (SHC)	2.35	65	1851	Uncirculated. Faint scratch in field.
HC	1.05	66	1851	Very good. Shank removed from reverse.
C (SHC)	2.25	67	1852	Very fine.
C (SHC)	2-	68	1852	Very fine. 2 dents on edge.
C (SHC)	2.25	69	1853	Extremely fine.
HC	1.10	70	1853	Very good. Shank removed.
C (SHC)	2.30	71	1854	Uncirculated. Brilliant. Mint lustre.
C (SHC)	2.20	72	1854	Small head of Liberty with Indian head-dress. Size 9. Uncirculated. Brilliant. Mint lustre.
C (SHC)	2.20	73	1855	Uncirculated. Brilliant. Mint lustre.
Elder	1.75	74	1856	Large head of Liberty with Indian head- dress. Slanting 5. Fine. 2 pcs.
HC	2.10	75	1857	Uncirculated. Mint lustre.
Count	3-	76	1858	Dahlonga Mint. Fine. Polished. Very rare. <i>Count 4.</i>
Count	3-	77	1859	Uncirculated. Mint lustre. <i>Count 5.</i>
<i>sp.</i>	4.25	78	1859	Dahlonga Mint. Rev. Center weak as usual. oL, 5 almost invisible. Very rare.
Coast	2.50	79	1860	Extremely fine. <i>Coast 2.30</i>
HC	2.05	80	1861	Uncirculated. Mint lustre.
	1.70	81	1862	Very fine.
HC	8.75	82	1866	Uncirculated. Mint lustre. Very rare. <i>Cal 8. Count 5.50 Coast 3.</i>
Est	5-	83	1870	Uncirculated. Brilliant. Mint lustre. Rare. <i>Bit 4.65 Coast 4.</i>
HC	2.05	84	1873	Uncirculated. Brilliant. Mint lustre.
HC	1.80	85	1874	Uncirculated. Brilliant. Mint lustre.
Est		86	1876	Uncirculated. Proof surface. Rare. <i>Coast 3.</i>
<i>Est</i>	8-	87	1880	Unc. Proof surface. Rare, only 1,636 coined.
Coast	2.20	88	1881	Uncirculated. Brilliant. Mint lustre. <i>Coast 2.</i>
Coast	2.25	89	1882	Unc. Brilliant. Mint lustre. 5,040 coined. <i>Coast 2.25</i>
Coast	2.25	90	1883	Uncirculated. Mint lustre. 10,840 coined. <i>Coast 2.25</i>

<i>Edson</i>	2.30	91	1884	Brilliant proof. 6,206 coined.	<i>Coast 2.10</i>
<i>HC</i>	2.10	92	1885	Uncirculated. Mint lustre.	
<i>HC</i>	2.05	93	1886	Uncirculated. Mint lustre.	
<i>Bat</i>	2.40	94	1887	Uncirculated. Brilliant. Mint lustre.	<i>Bat 2.40</i>
<i>Bat</i>	2.30	95	1888	Uncirculated. Brilliant. Mint lustre.	<i>Bat 2.40</i>
<i>Coast</i>	2-	96	1889	Uncirculated. Brilliant. Mint lustre.	<i>Coast 2.</i>

GOLD PROOF SET.

<i>C</i>	40-	97	1898	Complete set of the year. \$20, 10, 5, 2½; Silver, \$1, .50, .25, .10; nicked, 5c.; bronze, 1c. Brilliant proofs.
----------	-----	----	------	---

PROPRIETARY GOLD COINS.

CAROLINA.

<i>Buffalo</i>	2.10	98	\$1. A BECHTLER. DOL;* Rev. CAROLINA GOLD. 21. C., in center 27. G. Fine. Dent on obv.
----------------	------	----	--

CALIFORNIA.

UNITED STATES ASSAY OFFICE.

<i>C</i>	21-	99	1853	\$20. Obv. similar to regular issue rev. 900 THOUS. Rev. in label across engine turned field UNITED STATES ASSAY-OFEICE OF GOLD-SAN FRANCISCO-CALIFORNIA. 1853. Fine. Few nicks on edge. A No. 23.
----------	-----	----	------	--

KELLOGG & Co.

<i>Edson</i>	24-	100	1854	\$20. Types of regular coinage. KELLOGG & co. on diadem. Rev. SAN FRANCISCO CALIFORNIA. TWENTY D. Eagle. Very fine. Small letters on diadem. A No. 52.
--------------	-----	-----	------	--

WASS-MOLITOR AND COMPANY.

<i>Edson</i>	14-	101	1852	\$10. Head of Liberty l., wearing diadem on which W. M. and sign Co. Rev. s.M.V. CALIFORNIA GOLD below TEN D. Eagle as regular coinage. Stars before face weak as usual, and s m v faintly struck. Edge milled. Fine. A No. 47.
--------------	-----	-----	------	---



PLATE II.



107



139



140



672



674



675



H. SCHAEFFER.

- alarm* 123-102 (1849) \$5. H SCHAEFFER, below 7 stars. In center 5 DOLLARS. Rev. CALIFORNIA GOLD. Below CARATS. In center 134 GR. - 21. Border of beads. Struck on a copper Cent dated 1841. Unique. I first discovered this unknown impression from these dies about three years ago. No other impression is known. As quoted in Mr. Adams' work Prof. Hidden, who has made a particular study of the coins of Carolina, pronounced it to be the work of Heinrich Schaeffer who was an assistant of the Bechtlers in Carolina, and who had a set of dies made to take to California and to be used in striking coins. See Adams, page 109, No. 99. To be sold without reserve as the property of S. H. Chapman. *after-judge, alarm 126.*

CALIFORNIA IN GENERAL.

- HC* 110 104 1871 Quarter Dollar. Head of Liberty surrounded by 9 stars. Rev. $\frac{1}{4}$ DOLLAR in wreath. Oct. Unc.
- Cal* 1.20 105 1873 Half Dollar. Indian head l. Rev. $\frac{1}{2}$ DOLLAR in wreath. Round. Unc. *Cal 1.40*
- HC* .70 106 1881 Similar. Octagonal. Unc.

SILVER DOLLARS.

- C* 60-107 (SAC) 1794 Head of Liberty r., 8 stars behind and 7 before head. LIBERTY above, date beneath. Rev. UNITED STATES OF AMERICA; eagle standing on ground within olive wreath. Edge, HUNDRED CENTS, ONE DOLLAR, OR UNIT. Good. Stars behind head weak as always. On rev. the letters within parenthesis are only faintly visible. In field before face a depressed burnished spot. Very rare. See plate.
- HC* 1.25 108 1795 Same type. Head with nick in die. Large initials scratched in r. field. Good.

- about* 2-109 1795 Bust, filleted and draped r.; six stars before and eight behind bust. Rev. Eagle on clouds within wreath of olive and palm, otherwise as 1794. Die with bust in center. Good. *about-judge*
- Elder* 2.70 110 1796 Small date. Rev. Large letters. Good.
- ...* 4-111 1796 Large date. Rev. Small letters. Piece out of die between r c. Planchet dent on edge. Fine. *Box 2.75*
- Elder* 3.75 112 1797 Six stars before, ten behind bust. Fine. *Box 2.75 Can 2.80*
- ...* 3.10 113 1797 Seven stars before, nine behind bust. Obv. weak. Good.
- HC* 2.10 114 1798 Thirteen stars. Same rev. Die cracked through T. Fine. Rare.
- C (SHC)* 2-115 1798 Close date. 8 touches bust. Fine small stars. Knobbed 9. Rev. 5 berries. Fine. Small dinge on edge.
- ...* 1.80 116 1798 Rev. Heraldic eagle. Very good.
- C (SHC)* 2-117 1799 Five stars facing. Fine. Rare.
- C (SHC)* 1.50 118 1799 First star touches bust, first 9 above other figures and tilted to l. Fine. Scarce variety.
- HC* 1.90 119 1799 Six stars facing—small fine stars. Fine.
- HC* 1.40 120 1799 Same dies. Good.
- C (SHC)* 1.50 121 1800 Fine. Two dark streaks in planchet—one across chin.
- about* 4.50 122 1801 Very fine. Strong impression. Mint lustre. *about-judge Box 2.75 Can 3.*
- meal* 1.60 123 1801 Same. Good. EL scratched in r. field.
- C (SHC)* 2.20 124 1802 Over 1. Fine.
- Box* 2.50 125 1802 Fine. *Box 2.50*
- Elder* 2.30 126 1803 Small 3. Fine.
- HC* 1.80 127 1803 Large 3. Very good. Some nicks on edge.
- Note.—No dollars were legally issued between 1804 and 1840 for Patterns of 1836, 8 and 9. See Patterns Nos. 672-6.
- Bumback* 1.40 128 1840 Same. Rev. Eagle with open wings, with shield on breast bears olive branch in r. and 3 arrows in l. talon. Very fine. Scarce.
- Can* 2-129 1841 Uncirculated. Mint lustre. Scarce state. *Can 3.*
- C (SHC)* 1.75 130 1842 Uncirculated. Mint lustre.

(SHC)	1.25	131	1843	Extremely fine. Mint lustre.	
dopt	1.75	132	1844	Extremely fine. Scarce. Only 20,000 coined.	<i>dopt 1.75 Can 1.75</i>
	1.25	133	1845	Very fine. Scarce. Only 24,000 coined.	
	1.30	134	1846	Uncirculated. Proof surface. Scarce state.	<i>Est 1.20</i>
(SHC)	1.20	135	1847	Uncirculated. Mint lustre.	
Bill	2-	136	1848	Uncirculated. Mint lustre. Scarce.	<i>dopt 2.75 Est-judge Can 7</i>
	1.25	137	1849	Extremely fine. Mint lustre.	
	1.25	138	1850	Extremely f. Proof surface. Sharp. Scarce.	
			1850	Orleans. Extremely fine.	2 pcs.
Est	100-	139	1851	Uncirculated. Mint lustre. V. rare. Plate II.	<i>Est-judge Can 40</i>
Est	115-	140	1852	Brilliant proof. Very rare. Plate II.	<i>Can 40</i>
an	2-	141	1853	Very fine. Scarce.	<i>Can 3</i>
(SHC)	7-	142	1854	Uncirculated. Mint lustre. Rare.	<i>Can 5. Disk 4.50</i>
(SHC)	7-	143	1855	Uncirculated. Mint lustre. Small dent on chin. Rare.	
an	1.60	144	1855	Good. Rare. Dinged on obv. edge.	
an	2.20	145	1856	Very fine. Scarce.	<i>Can 2</i>
(SHC)	5-	146	1857	Brilliant, sharp proof. Very rare state.	<i>Can 3</i>
dopt	25-	147	1858	Proof—now very fine and slightly polished all over. Only proofs struck. Very rare.	<i>Can 20. Chief 25</i>
(SHC)	1.25	148	1859	Proof. Slightly hair-marked and small dent on jaw.	
	1.60	149	1859	Orleans Mint. Uncirculated. Mint lustre.	
IC	4.25	150	1859	San Francisco Mint. Uncirculated. Scarce.	
IC	1.30	151	1860	Brilliant proof.	
	1.70	152	1860	Orleans Mint. Uncirc. Mint lustre. Scarce state.	
Bill	2.75	153	1861	Brilliant proof.	<i>Bill-judge Can 2.50 Disk 1.35</i>
an	2-	154	1862	Brilliant proof.	<i>dopt 1.75 Can 2</i>
an	2.25	155	1863	Brilliant proof.	<i>Can 2.50</i>
dopt	1.75	156	1864	Brilliant proof.	<i>dopt 1.75</i>
dopt	1.50	157	1865	Brilliant proof.	<i>dopt 1.50 Est 1.35 Can 1.50</i>
an	1.50	158	1866	Brilliant proof.	<i>Can 1.50</i>
(SHC)	1.25	159	1867	Brilliant proof.	
(SHC)	1.25	160	1868	Brilliant proof.	
an	1.50	161	1869	Brilliant proof.	<i>Can 1.50</i>
an	2-	162	1870	Brilliant proof.	<i>dopt 1.50 Can 2</i>

<i>C (SHC)</i>	1.10	163	1871	Brilliant proof.
<i>C (SHC)</i>	1.10	164	1872	Brilliant proof.
	1.80	165	1872	Carson City. V. g. Small dent ab. head. Rare.
<i>adpt</i>	1.50	166	1873	Brilliant proof. <i>adpt 1.50 Can 1.25</i>
	1.10	167	1873	Trade Dollar. Liberty seated on cotton-bale, surrounded by 13 stars. Rev. Eagle, defiant, holds arrows and olive branch. Brilliant proof.
	1.10	168	1874	Brilliant proof.
	1.10	169	1875	Trade. Brilliant proof.
	1.10	170	1875	Trade. Carson City. <i>Fine. Hood</i>
	1-	171	1876	Trade. Brilliant proof.
<i>HC</i>	1.20	172	1876	Trade. San Francisco. Microscopic S. Without berry under eagle's claw. Very fine.
	.85	173	1876	Trade. San Francisco. Medium S. Berry under eagle's claw. Fine.
<i>adpt</i>	1.50	174	1877	Trade. Brilliant proof. <i>adpt 1.50</i>
<i>C (SHC)</i>	1-	175	1877	Trade. San Francisco. Smaller S. No berry under claw. Unc.
<i>C (SHC)</i>	1-	175a	1877	Same. Minute S. Unc. Mint lustre.
<i>C (SHC)</i>	1-	176	1878	Trade. Brilliant proof.
<i>C (SHC)</i>	1-	177	1878	Trade. San Francisco. Unc. Mint lustre.
<i>C (SHC)</i>	1.50	178	1878	Standard. Head to l., by Morgan. Above E. PLURIBUS. UNUM. Below 13 stars. Rev. Eagle with wings raised, and seven feathers in tail. Brilliant proof.
<i>Bake</i>	2-	179	1878	Same. Rev. Eagle has eight feathers in tail. Brilliant proof. <i>Bake 2.50</i>
	1.10	180	1878	Same. San Francisco. Unc. Mint lustre.
<i>C (SHC)</i>	1.10	181	1879	Standard. Brilliant proof.
<i>C (SHC)</i>	1-	182	1879	Trade. Brilliant proof.
<i>C (SHC)</i>	1.10	183	1880	Standard. Brilliant proof.
	1.50	184	1880	Standard. Orleans Mint. Unc. Mint lustre.
	1.50	185	1880	Standard. San Francisco. Unc. Mint lustre.
	1.10	186	1880	Trade. Brilliant proof.
	1.10	187	1881	Standard. Proof.
<i>Pyra</i>	1.00	188	1881	Orleans Mint. Uncirculated. Mint lustre.
<i>adpt</i>	1.50	189	1881	San Francisco. Uncirculated. Mint lustre.

(S.C.) 1-	190	1881	Trade. Brilliant proof.	
1.50	191	1882	Standard. Brilliant proof.	
(S.C.) 4-	192	1882	Trade. Brilliant proof.	
(S.C.) 1.10	193	1883	Standard. Brilliant proof.	
1.50	194	1883	Orleans Mint. Uncirculated. Mint lustre.	Bake 1.50 Coat 1.50
1.50	195	1883	San Francisco Mint. Unc. Mint lustre.	Coat 1.50
1.10	196	1883	Trade. Brilliant proof.	
(S.C.) 1.10	197	1884	Standard. Brilliant proof.	
1.60	198	1884	Orleans Mint. Uncirculated. Mint lustre.	
1.50	199	1884	San Francisco Mint. Unc. Mint lustre.	
1.50	200	1884	Carson City. Uncirculated. Mint lustre.	Coat 3. Coat 1.50
1.50	201	1885	Standard. Orleans. Unc. Small nick-below head.	Bake 1.50 Die 1.50
1.50	202	1885	San Francisco. Unc. Mint lustre.	
6-	203	1885	Carson City. Uncirculated. Mint lustre.	Bake 6. Coat 1.50
1.10	204	1886	Brilliant proof.	Coat 1.50 Die 2.85
1.20	205	1887	Brilliant proof.	
1.20	206	1888	Brilliant proof.	
1.25	207	1891	Brilliant proof.	Can 1.25
1.20	208	1892	Brilliant proof.	
1.25	209	1894	Brilliant proof.	Can 1.25
1.10	210	1895	San Francisco. Uncirculated. Mint lustre.	
1.20	211	1896	Orleans. Uncirculated. Mint lustre.	
1.40	212	1897	San Francisco. Uncirculated. Mint lustre.	Can 1.30
1.30	213	1898	San Francisco. Uncirculated. Mint lustre.	Can 1.20
1.30	214	1899	Brilliant proof.	Can 1.30
1.50	215	1899	Orleans. Unc. Mint lustre. Scarce.	Bake 1.75
1.40	216	1899	San Francisco. Uncirculated. Mint lustre.	
(S.C.) 1-	217	1900	Uncirculated. Mint lustre.	
(S.C.) 1.20	218	1900	Orleans. Uncirculated. Mint lustre.	
1.50	219	1900	Washington and Lafayette. Rev. Statue. Unc.	
(S.C.) 1.10	220	1901	Uncirculated. Mint lustre.	
1.10	221	1901	Orleans Mint. Uncirculated. Mint lustre.	
1.60	222	1901	San Francisco. Uncirculated. Mint lustre.	Can 1.50
1.50	223	1902	Brilliant proof.	Can 1.50
1.30	224	1902	Orleans. Uncirculated. Mint lustre.	Bake 1.75 Coat 1.10
1.35	225	1902	San Francisco. Uncirculated. Mint lustre.	Coat 1.10

- Can* 1.50 226 1903 Brilliant proof. *Can* 1.50
Coast 1.60 227 1903 Orleans. Uncirculated. Mint lustre. *Coast* 1.10
Hydr 1.40 228 1903 San Francisco. Uncirculated. Mint lustre. *Coast* 1.10
 2- 229 1904 Unc. Mint lustre. Last year. Scarce.

HALF DOLLARS.

- Johns* 4.25 230 1794 Head of Liberty to r. Curl joins point of second star. Star to r. points beyond point of bust. Rev. 9 berries to r., 9 to l. Very good. Very rare variety. H. No. 4. *Cliff* 2.50
C 3- 231 1794 Curl through point of star. Star joins below point of bust. Rev. 9 to l. and 10 to r. Good. Very rare variety. H No. 2. *Cliff* 2.50
C 2- 232 1795 First star on left crosses end of curl which turns back completely over it. Small crack beginning under the first star at border extends to lower r. point of second star. Second star joins end of second curl which terminates just to r. of point and from curl extends a fine line to r. point of star. Point of bust points to l. of upper limb of star. Rev. 7 berries on l. and 9 on r. branch of wreath. On l. 1 berry close up under the angle of the stem and wing. Very fine. *Cliff* .85
HC .90 223 1795 Star on l. crosses curl and does not turn back. Second star clear of second curl. First star on r. points above line of bust and just above point of star is a double dotted break in die. Rev. 9 berries to l. 9 berries to r. Berry on the outside of the wreath between M and E. Fine. Rare. H. No. 9. *Cliff* .85
HC 1.10 234 1795 Stars to l. similar. Point of bust within point of star. Die cracked on head diagonally downwards through ear. Rev. 7 berries l., 9 r. Leaf joins first foot of M. Very good. *Cliff* .75
 Note.—Collection lacks 1796 and 97. None struck 1798-1800.
Johns 3.10 235 1801 Very good. Rare. *Can* 3. *Cliff* 1.75

- stars* 3.12 236 1802 Very good. Rare.
 .85 237 1803 Large 3. Very good. 2 pcs. *Count 1.00*
hms 1.80 238 1803 Small 3. Fine.
hms 1.10 239 1805 Over 4. Stars flat as usual. Fine. Scarce.
 .80 240 1805 Fine.
 1-241 1806 Figure 1 below curl. Stars widely spaced.
4c First star on l. below second curl. Top-knot under
 r. end of E. Rev. branch without stem through
 eagle's claw. Extremely fine. Mint lustre.
 .35 242 1806 Crowded stars. Star on l. above second curl.
 Top-knot just to r. of upright of E. Point of 6
 joins bust. Rev. Point of upper stars all touch
 clouds. Second star r. two points joining. V. g. R.
cut .65 243 1806 Knobbed 6. Very good. *Count. 65*
 .65 244 1807 Top-knot under r. end of E. Stars equally
 spaced. Point of 1 touches curl. Rev. Heavy ray
 extends from lower point of fourth top star to
 cloud. Very fine.
C 2-245 1807 Bust to l. wearing cap of Liberty and draped.
SHC Rev. Eagle to r. above on scroll E PLURIBUS UNUM.
 Below 50 C. Unc. Sharp. Mint lustre. *Value 1.50 Bick 1.*
C .60 246 1808 Crack from first star before head to nose.
SHC Very fine.
 .75 247 1809 Extremely fine. Mint lustre.
(SHC) .75 248 1810 Uncirculated. Mint lustre.
(SHC) .60 249 1810 Uncirculated. Mint lustre.
 .65 250 1811 Ex. fine. Light scratch from star across eye.
 .70 251 1812 Over 11. Extremely fine. Mint lustre. Rare.
upt 1.20 252 1812 Uncirculated. Mint lustre. Superb. *Adopt 2.*
 .60 253 1812 Very fine.
(SHC) .55 254 1813 Very fine. Weak impression.
(SHC) .60 255 1814 Extremely fine. Strong impression.
m 4-256 1815 Over 12 as all. Very fine. Rare. *Can 4. Cliff 1.75*
 Note.—None struck in 1816.
 .75 257 1817 Over 13. Stars sharp, bust not up as usual.
4c Unc. Mint lustre.

- C (SHC) .55* 258 1817 First star on r. close to hair. Rev. 1 between
 A T. Ex. fine. Sharp, except stars behind head.
- C (SHC) .55* 259 1817 Star on r. distant and above curl. Rev. 1 un-
 der T.
- C (SHC) .55* 260 1818 Unc. Sharp, even impression. 1 under TE,
 which letters are crowded together, the T out of
 line. Unc. Mint lustre.
- C (SHC) .55* 261 1818 Over 17. Very fine. Sharp.
- C (SHC) .55* 262 1819 Uncirculated. Sharp. Mint lustre.
- Elder .70* 263 1820 Over 19. Ex. fine. Mint lustre. Sharp.
- Adopt 1.20* 264 1820 Small date. Over 19. Different die to pre-
 ceding. Stars distant from bust. Unc. Sharp.
 Mint lustre. Gem. *Adopt 1.7*
- C (SHC) .55* 265 1821 Small date.
- C (SHC) .55* 266 1822 Extremely fine.
- C (SHC) .55* 267 1823 Extremely fine. Sharp.
- C (SHC) .55* 268 1824 Extremely fine. Sharp. Mint lustre.
- C (SHC) .55* 269 1825 Uncirculated. High 2, close date. Unc. Bust
 sharp, upper stars flat. Unc. Mint lustre.
- Adopt 1.20* 270 1826 Unc. Sharp. Small nick on chin.
- Adopt 1.20* 271 1827 Square based 2. Sharp. Magnificent impres-
 sion. Uncirculated. *Adopt 1.21*
- C (SHC) .55* 272 1829 Extremely fine. Sharp.
- Adopt 1.15* 273 1828 Small 8's. Square based 2. Rev. Large C.
 Unc. Proof surface. Gem. *Adopt 2.10*
- C (SHC) .55* 274 1828 Rev. Small C. Ex. fine.
- C (SHC) .55* 275 1827 Curved base 2. Very good.
- J. Fine .60* 276 1828 Large curved 2. Very fine.
- Adopt 1.25* 277 1830 Uncirculated. Sharp. Mint lustre. Gem. *Adopt 1.25*
- C (SHC) .55* 278 1831 Uncirculated. Mint lustre.
- C (SHC) .55* 279 1832 Different die. Very fine. 2 pcs.
- C (SHC) 1.25* 280 1833 Magnificent, sharp impression with proof
 surface, almost fully proof. *Adopt 1.10*
- C (SHC) .55* 281 1834 Large date. Space thus 18 34. Rev. Large 50
 C. and letters. Unc. Sharp. Lustre.

.60	282	1834	Large date. Rev. Small letters. Unc. Proof surface. Stars flat as usual. Bust sharp. Beautiful specimen.	
.55	283	1834	Small date and letters. Extremely fine.	
(SHC)	.55	284	1835	Uncirculated. Stars to r. flat.
(SH)	.55	285	1836	Uncirculated. Sharp stars. Mint lustre.
2d.	2.40	286	1836	By Gobrecht. Rev. Similar without motto, and edge reeded. Extremely fine. Faint scratch from border across cap. Mint lustre. Rare.
HC	2-	287	1836	Same. Very fine. Rare.
(SH)	.55	288	1837	Uncirculated. Mint lustre.
.80	289	1838	Uncirculated. Rev. similar eagle of different style, below HALF DOL. Proof surface. Sharp. Rare state.	
(SH)	.50	290	1839	Bust and Liberty seated. Fine. 2 pcs.
(SH)	.50	291	1840	Liberty seated. Orleans Mint. Unc. Without drapery from elbow. Another, fine. 2 pcs.
best	.80	292	1841	Extremely fine. <i>absent. 85</i>
best	.70	293	1842	Small date. Extremely fine. Proof surface. <i>absent 80</i>
(SH)	.60	294	1842	Large date. Uncirculated. Mint lustre.
unc	.80	295	1842	Uncirculated. Orleans Mint. <i>unc 1.</i>
an	.70	296	1843	Extremely fine. Different dies. 2 pcs.
best	.70	297	1844	Uncirculated. Mint lustre. <i>absent. 80</i>
.85	298	1845	Orleans Mint. Extremely fine. Mint lustre. <i>absent.</i>	
.85	298A	1846	<i>all 6. Uncirculated.</i>	
.55	299	1847	Extremely fine. Mint lustre.	
.65	300	1847	Orleans Mint. Uncirculated. Mint lustre.	
an	1-	301	1848	Date close to base. Extremely fine. <i>Can 3.</i>
HC	.60	302	1848	Date equidistant. Extremely fine.
(SH)	.55	303	1849	Fine crack connects bottom of figures. Unc.
chr	.85	304	1850	Date close to base. Extremely fine. <i>absent. 80</i>
.60	305	1850	Date equidistant. Very fine.	
(SH)	1-	306	1851	Extremely fine. Mint lustre.
3.60	307	1852	Uncirculated. Rare. <i>Can 3. Bick 2.85</i>	
2.30	308	1852	Orleans Mint. Very fine. Rare. <i>unc 2.75</i>	
1	309	1853	Arrows beside date. Orleans. Uncirculated.	
(SHC)	.50	310	1854	Uncirculated. Mint lustre.
.55	310A	1855	Orleans mint. Uncirculated.	

C (SHC) .50	311	1856	Uncirculated. Mint lustre. Date weak.
Cliff .60	312	1857	Uncirculated. Mint lustre. <i>Cliff .60</i>
Johns 1.10	313	1857	Orleans Mint. Uncirculated. Mint lustre. <i>Can. 1.10</i>
Adopt 1.25	314	1858	Brilliant proof. Rare. <i>Adopt 1.25</i>
C (SHC) .50	315	1858	Uncirculated. Mint lustre.
Cliff .65	316	1859	Brilliant proof. Short scratch above eagle. <i>Cliff .65</i>
.65	317	1860	Brilliant proof.
.65	318	1861	Brilliant proof.
Bill 1-	319	1862	Brilliant proof. <i>Bill-judge</i>
HC .65	320	1863	Brilliant proof.
HC .65	321	1863	Brilliant proof.
Can .75	322	1864	Brilliant proof. <i>Can 1.</i>
Can .75	323	1865	Brilliant proof. <i>Can 1.</i>
C (SHC) .60	324	1866	Brilliant proof.
Johns 1.90	325	1866	San Francisco. Without motto. Fine. Rare. <i>Can. 1.90</i>
Cliff .60	326	1867	Brilliant proof. <i>Cliff .60</i>
Cliff .60	327	1868	Brilliant proof. <i>Cliff .60</i>
C (SHC) .60	328	1869	Brilliant proof.
.65	329	1870	Brilliant proof.
C (SHC) .65	330	1871	Brilliant proof.
HC 1.10	331	1871	San Francisco. Uncirculated. Mint lustre.
Can .75	332	1872	Brilliant proof. <i>Can. 75 Cliff .60</i>
Cliff .60	333	1873	Brilliant proof. <i>Cliff .60</i>
C (SHC) .50	334	1873	Brilliant proof.
C (SHC) .50	335	1873	With arrows beside date. Brilliant proof.
.50	336	1873	Same. 1874, 5. Brilliant proof. 43 pcs.
C (SHC) .50	337	1876	Uncirculated. Proof surface.
Cliff .85	338	1877, 8, 9, 80, 1, 2, 3, 4, 5, 6, 7, 8, 9, 90.	Brilliant proof. 14 pcs.
.85	339	1877, 9, 80, 1, 2, 3, 4.	Brilliant proof. 7 pcs.
.75	340	1896	Orleans Mint. Uncirculated. Mint lustre.
.75	341	1897	Orleans Mint. Uncirculated. Mint lustre.
Johns 1.10	342	1897	San Francisco Mint. Unc. Mint lustre. <i>Can. 1.10</i>
.80	343	1898	Orleans Mint. Uncirculated. Mint lustre.
Johns 1-	344	1898	San Francisco. Uncirculated. Mint lustre. <i>Can. 1.</i>
1-	345	1899	Orleans Mint. Uncirculated. Mint lustre.

<i>Car</i>	.85	346	1899, 1900	San Francisco. Uncir. Mint lustre.	
					2 pcs.
<i>HC</i>	.50	347	1900, 3, 4	Orleans. Uncir: Mint lustre.	3 pcs.

QUARTER DOLLARS.

<i>;))</i>	3.50	348	1796	Bust of Liberty r., draped and with flowing hair tied with a fillet. LIBERTY above; beneath 1796. Seven stars before and eight behind head. Rev., UNITED STATES OF AMERICA. Eagle standing on clouds within wreath. Broad border of deep serratures. Fine. <i>Car</i>	
				Note.—None struck until 1804.	
<i>n</i>	2-	349	1804	Very good. Rare. <i>Can. 4.</i>	
<i>rt</i>	2-	350	1805	Very fine. <i>abbot-judge Count. 65</i>	
<i>rt</i>	.40	351	1806	Over 5, 1807(2) different variety. 1815. Very good.	4 pcs. <i>Count. 36</i>
<i>yc</i>	.30	352	1818	Very fine.	
	.30	353	1819	Large date. Fine.	
<i>HC</i>	1-	354	1820	Large date. Uncir. Sharp. Mint lustre.	
<i>HC</i>	1-	355	1821	Extremely f. Mint lustre. Slightly rubbed on bust.	
	.55	356	1824	Very good. Scratch above head.	
	.30	357	1825	Over 3. Unc. L stamped in field above head.	
<i>nt</i>	.30	358	1828	Different dies. Very good.	2 pcs. <i>Count. 35</i>
<i>HC</i>	.25	359	1831	Different dies. Extra fine.	2 pcs.
	.40	360	1832	Extremely fine. Proof surface. <i>Can. 55</i>	
	.50	361	1834	Uncirculated. Proof surface. Scarce. <i>Can. 75</i>	
<i>HC</i>	.25	362	1836	Die cracked down head. Extremely fine.	
	.30	363	1837	Die cracked from top of cap to bust. Uncirculated. Lustre.	
	.30	364	1838	Liberty seated, 1839, 1840, latter Orleans. Fine.	3 pcs.
	.35	365	1840	Orleans. Uncirculated. Mint lustre.	
	.30	366	1841	Orleans. 1843. Fine.	2 pcs.
	.29	367	1842, 4, 5	Very fine.	3 pcs.
	.50	368	1846, 47	Uncirculated.	2 pcs. <i>Can. 50 (each)</i>

<i>Can</i>	.60369	1849	Uncirculated. Mint lustre. Scarce. <i>Can. 75</i>	
<i>Can</i>	.30370	1850	Very fine. Scarce.	
	.25371	1851, 2	Very good. Scarce.	2 pcs.
<i>MC</i>	2.30372	1853	Fine. Rare.	
	.45373	1853	Light weight. Arrows beside date and rays on rev. Uncirculated.	
<i>Can</i>	.50374	1854, 5, 6, 7, 8	Uncirculated. Lustre.	5 pcs. <i>Can. 75 each</i>
<i>Can</i>	.60375	1859	Brilliant proof. Scarce. <i>Can. 75</i>	
<i>Can</i>	.50376	1860, 2	Brilliant proof.	2 pcs. <i>Can. 75 each</i>
	.30377	1861, 2, 3	Uncirculated. Mint lustre.	2 3 pcs.
<i>Can</i>	.60378	1864	Brilliant proof. Scarce. <i>Can. 75</i>	
<i>HC</i>	.30379	1865	Proof. Tarnished.	
<i>Can</i>	.50380	1866	Brilliant proof. <i>Can. 75</i>	
<i>HC</i>	.30381	1867, 8	Proof. Tarnished.	2 pcs.
<i>Can</i>	.50382	1869, 70	Brilliant proofs.	2 pcs. <i>Can. 75 each</i>
<i>Can</i>	.25383	1871, 2, 6, 9	Uncirculated. Lustre.	4 pcs.
<i>Can</i>	.40384	1873	With and without arrows, 4, 5, 7, 8. Brilliant proofs.	6 pcs. <i>Can. 75 each</i>
<i>Can</i>	.25385	1880, 1, 2, 3, 4	Brilliant proofs.	5 pcs.
	.40386	1893	Isabella. Uncirculated. Mint lustre.	
<i>Can</i>	3-387	1895	Silver proof set. \$1, 1/2, 1/4, 1/10, 5, 1. <i>Can 5.</i>	

CENTS.

<i>C.</i>	2-388	1785	LIBERTAS ET JUSTITIA 1785. U S in script within wreath. Rev. NOVA CONSTELLATIO. Eye in glory of rays between which stars. Ex. fine. L. o. Not struck sharply as usual. C. Pl. VIII. 26.
<i>C.</i>	2-388a	1785	Same. Fine wreath. Rev. Eye in glory of rays broadening to the ends. Extremely f. Rare. L. o. C. 3-3.
<i>C.</i>	3-388b	1785	Same. Fine.
<i>Can</i>	3-388c	1787	*FUGIO.* * 1787 * Sun-dial above which Sun, exg. (M)I(ND) YOUR.(BUS)INESS. Rev. STATES UNITED. Chain. Fine.
<i>act</i>	3-388d		U S A Rev. Thirteen bars. V. g. Obv. letters bruised. Rare. <i>act 2.</i>

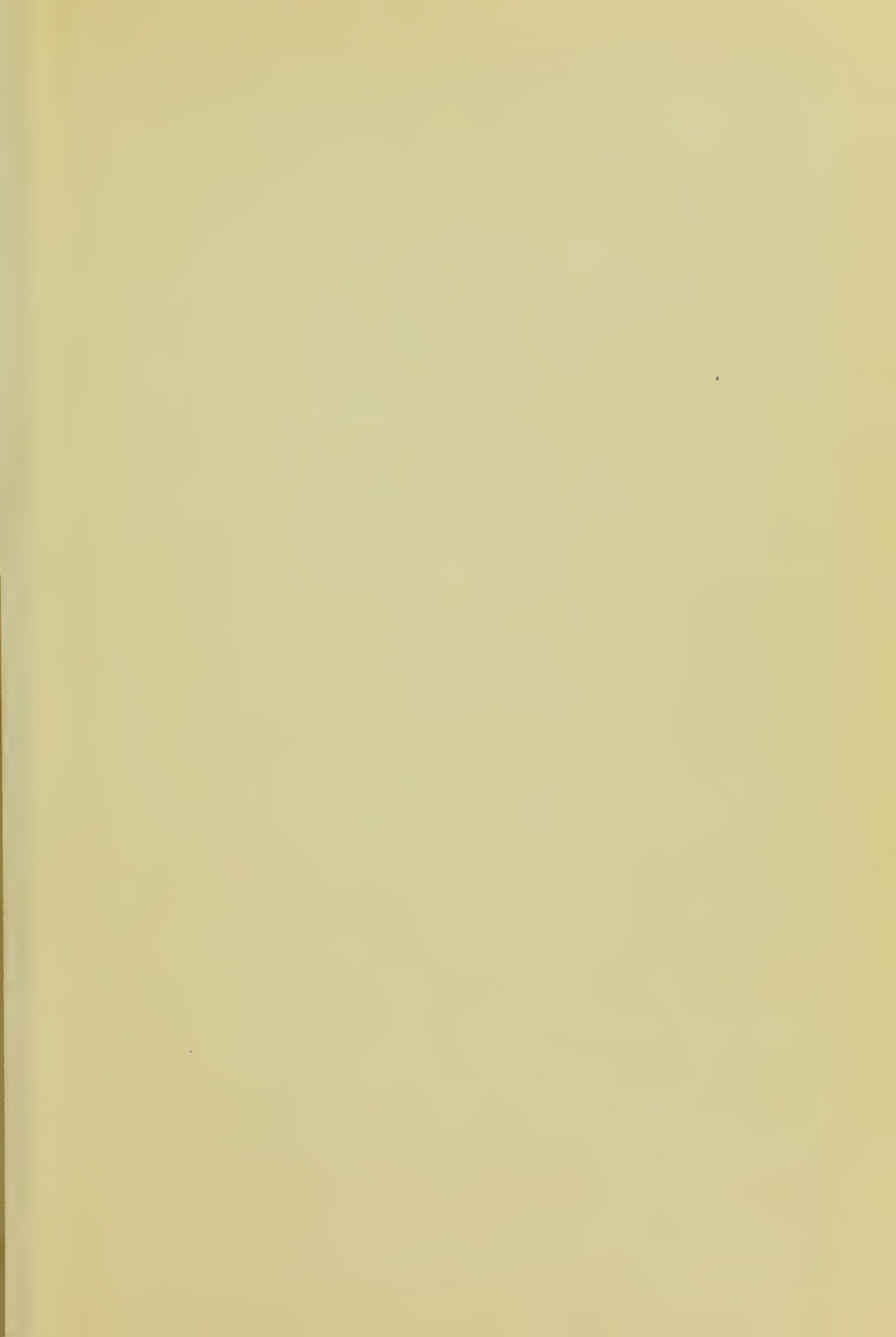


PLATE III.



383



392



390



393



384



396



400



402



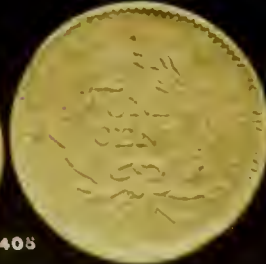
403



404



405



406



16- 389 Chain. Broad head and short hair. Rev. UNITED STATES OF AMERI. Endless chain of fifteen links enclosing ONE CENT-1/100. Edge, vine and bars. Very fine except on fields in front of neck to border the letter A and behind the head of the letter B were lightly scratched before the Cent toned. Very rare. C 1-A. See plate. *Bag 7.10 Brink 7-5*

Wuntzback

F.M. 7- 390 1793 Chain. Head in high relief with longer hair. Rev. AMERICA. Very good. Rare. C.3-C. *Coal 6. (A 391) Club 5.35*

5.25 391 1793 Chain. Same. Light olive. Dent on edge before face. Slight bruise over LI. Rev. Edge nicked. Very good. Rare.

Wuntzback

14- 392 1793 Chain. Periods after LIBERTY and date. Head in very low, delicate relief. Fine. Pale light brown olive color. Very rare. Plate. C-4. *Bag 7.10 Brink 5. Cent 23.*

Wuntzback

10- 393 1793 Wreath. Large LIBERTY and date. Liberty head r. with large coarse locks as if blown by the wind; below, triple leaved olive spray with broad leaves, below 1793. Rev. UNITED STATES OF AMERICA; in centre olive and clover wreath enclosing ONE CENT. Edge, vine and bars. Fine. Surface slightly eroded. Olive color. C.6.F. Plate. *Bag 7.10 Coal 8. Day 9.05*

Scott

4.25 394 1793 Wreath. Small LIBERTY and date. Branch of olive spray horizontal, from which rises three leaves. Fine. LIBERTY weakly struck, barely visible. Lightly eroded surface. Fine. Light olive. C. 9-H. Plate.

HC

3.75 395 1793 Same obv. Rev. Similar but loop of bow forms a triangle. V. g., but deep cut across lower part of hair. C. 9-G. *Book 1.50*

7- 396 1793 Wreath. Stem of spray starts between 7-9 and has broad leaves. Rev. Loop small and thick. Very good. Edge bruised. Very rare. C. 7-F.

2.10 397 1793 Wreath. Spray starts between 7-9 and has three narrow leaves, the central one nearly vertical, and leaf to l. not near hair. Good, but deep crescent cut in r. field. V. r. L. o. C. 10-F. *See 3-11. I. Day 2. Able 5. Book 1.50*

- 5.75 398 HC 1793 Wreath. Lettered edge. Spray starts above 9. First leaf on l. vertical, second and third trend to r. Edge ONE HUNDRED FOR A DOLLAR. Fine. Two bruises on obv. edge below bust. Light olive. Rare. C. 11-J. Plate. *Clay 6.05*
- HC 3.10 399 1793 Wreath. Same. Good. Rare. Light olive. *Back 2.*
- 24-400 HC 1793 Liberty Cap. Bust of Liberty to r. Finely modeled and of artistic merit. Over her l. shoulder Liberty pole and cap. Rev. Similar. V. good. V. rare—the rarest Cent. C. 12-L. See plate. *act 25. Bag 7.10 Clay 19.5.*
 Note.—For the information of collectors, as the term “very good” the actual condition of the coin may cause readers to underestimate its value, I will state that I would appraise it to be worth fully \$25.
- 10-401 Coal 1793 Same. Good. Surface eroded. Rev. rather sharper than preceding. V. r. Worth about \$15. *Coal 10.*
- 28-402 Coal 1793 Liberty Cap. Cracked die. The die split diagonally from E to 3. Fine. Extremely rare. C. 13-L. Worth \$30-40. Plate. *Abt 26. Am 20.-25. Bag 7.10 Cart 25. Clay 25.*
- 80-403 clam 1793 Liberty Cap. Shorter and broader head with the hair in a heavier mass behind neck and in higher relief. Die slightly cracked from a bead on the border through the right side of the letter Y to the forehead. Rev. same. This obv. die is exceedingly rare. Fine. C. 14-L. See plate. *Abt 45. Cart 25. Bag 7.10*
 Note.—As a proof of how rare this die is I will mention that in 37 years in the business it is the first time I have ever catalogued or had it in a sale as well as I can recall. No specimen in any of the large sales within past 23 years, except one only “good,” defective, Guy Sale, 1911, \$42.50. *Cart 75. Clam 25.-35. Clay 75.*
- 7-404 Scott 1794 Head resembling the preceding, of the same style and by the same hand. Date horizontal. Spaced thus 179 4, the last close to bust. Hays No. *4 Y. D. Hays No. 1794. Side 1794.*

1. Very fine, but the planchet was not full on the obv., which caused it to appear as if the edge had been cut away from B to Y, and some vandal not appreciating the artistic treatment of the hair *en masse* has very lightly and delicately tooled lines in the hair. Plate.

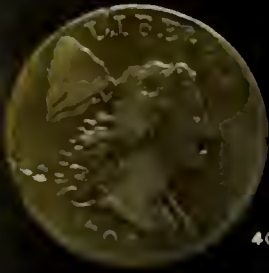
- Clam* 10-405 1794 Similar head. Close curved date. Hays No. 2. Very good. Very rare. *Alto 8. Ave. 5.75 Beck 1. 2 sp 5. Clam-12. Clay 3.85*
- 77-406* 1794 Similar style. Date horizontal and widely spaced. 4 distant from bust. Hays No. 4. Fine, but has been cleaned bright and darkening on head and portions of field. Some small nicks on head and in field of obv. Very rare. Plate III. *Alto 12. Alto 26. Beck 1. Sp 2.50 Clay 3.65*
- Jenkins* 250-407 1794 Head of thin, sketchy style. Hays No. 5. Four nicks behind lower part of the hair, one between L I. Rev. Three short cuts on edge. Very good. Light olive. Rare. Plate. *Clay 2.65*
- Walker* .85 408 1794 Hays 6. Good. Pitted all over. Rare.
- Alto* 14-409 1794 Hays 7. Die perfect before crack. V. f. Splendid impression. Surpasses the specimen in the Hays plate. Very rare. Plate. *Alto-14. Clay 9.85*
- F.M.* 2.25 410 1794 Hays 7. Before the die cracked. Fine.
- 10-411* 1794 Hays 7. Die cracked downwards from E through head to side locks. Very fine. Planchet nicked over R on edge. Lt. brown color. Plate. *Beck 1.50 Clay 4.85*
- Arch* 1.25 412 1794 Hays 10. Good. Rare. *Ave. 1.50 Sp 5.*
- HC* 10.00 413 1794 Hays 13. Uncirculated. Splendid impression. Dark olive green color. Plate. *Alto 3. Beck 2.05 Club 3.50 Clay 8.85*
- 2-414* 1794 Hays 14. V. f., but for bruise on fore-lock and several shallow bruises on lower part of bust. Dark olive. Plate.
- (SHC)* HC 2.25 415 1794 Hays 15. Lower part of CEN on rev. scratched off, otherwise fine. Light olive. Plate IV. *Clay 2.15*
- 130-416* 1794 Hays 16. Numerous nicks on center of head and dent on edge over T, otherwise fine. Lt. olive. Plate IV.
- Walker*

- 5.25 417 1794 Hays 17. Obv. slightly eroded and field bur-
nished and highest part of hair slightly retouched.
Rev. Unc. Light olive. Plate.
- 5-418 1794 Hays 18. Deep dent on cheek and edge
slightly dinged. Very good. Very rare. Plate. *Wt 12.50 arc 4.50 Cart 3.95*
- 1.10 419 1794 Hays 18. Good. Center of rev. invisible. Lt.
olive. Very rare. ~~Plate~~.
- Clay 5-420 1794 Hays 19. Very good. Very rare. Plate. *unc 4.50 Clay 5.05*
- Clay 11-421 1794 Hays 20. Fine. Light olive. Date weak. Dent
on edge. Very rare. Plate. *Clay 7.65*
- Barley 3.75 422 1794 Hays 21. Very fine. Black. Plate. *Clay 2.65 Cart 3. Brink 1.35*
- Cart 6-423 1794 Hays 22. Very fine. Light olive. Plate. *Clay 5.15 Cart 8.*
- 424 1794 Hays 23. Very good. Light brown color.
- Deep 5-425 1794 Hays 24. Very fine. Numerous microscopic *Clay 4.65*
nicks on both sides. Light orange color. Plate. *Beck 2. Deep 5*
- t. H. 42 25-426 1794 Hays 25. Very good. Very rare. Plate. *Wt 22. arc 4.50*
- H.C. 40427 1794 Hays 26. Poor. Letters scratched in field. *Beck 2.*
- 4-428 1794 Hays 29. Fine. Die cracked from r. edge of *Deep 4.*
E through head to 4. Fine. Black. V. rare. Plate. *Claw 8.*
- Clay 4.5 429 1794 Hays 32. Fallen 4. V. f. Lt. brown. o. Plate. *Clay 10.85*
- C (SHC) 5-430 1794 Hays 32. Very fine. *unc 5.50*
- Clay 1-431 1794 Hays 32. Good. *Clay 4.15*
- 3-432 1794 Hays 33. Perfect rev. die. Fine. Dark brown. *Beck 2. Deep 2.75*
- 35-433 1794 Hays 33. Obv. cracked along back of cap to *Clay 10.05*
date through 17 to border. Rev. die broken from
border to ~~end~~ in 1. Extremely fine. Slight scratch
on cheek. Proof surface on obv. Plate. *Clay 14.*
- (SHC) 1-434 1794 Hays 33. Eroded spot below cap and on r.
edge, also on rev. involving o. Very fine. *Cart 3.*
- 20-435 1794 Hays 34. Rev. die perfect. Uncirc. Slightly
rubbed on the highest tips of hair. Olive brown
color with proof surface on obv. Plate. *Brink 1.40*
- Clay 4-436 1794 Hays 34. Rev. die broken through U to leaf.
Very fine. Light brown, olive color. Plate. *Brink 2.40 Clay 5.25*
- .75 437 1794 Hays 35. Obv. good, rev. poor. Scarce. *Clay 8.*
- 2.50 438 1794 Hays 36. Fine. Surface eroded. Rare. *Beck 1. Clay 1*

- y 2-439 1794 Hays 37. Light orange olive color. Fine.
- 2.30 440 1794 Hays 39. Broad serratures. Rough surface now smoothly toned over. Olive color. Plate.
- m 4-441 1794 Hays 39. Edge ONE HUN A DOLLAR- F. Black. *Clam 6. Clay 1.2*
- HC) .50 442 1794 Hays 39. Good. Light olive.
- 3-443 1794 Hays 40. ³⁹ Fine. Light olive. No nicks or damages. Beautiful color, worthy of being placed in any collection. ~~Extremely rare.~~ Plate. *able 5. alt 15. back 2. Deep 6. Coat 5.*
- black*
18-444 1794 Hays 42. Very fine but for a depression in planchet before striking which has prevented the figure 7 and lower part of truncation from being struck up. Rev. perfectly struck up. Light olive color. Very rare. Plate. *able 15. Back 4. Deep 2.*
- key*
130-445 1794 Hays 42. With a new rev. heretofore unpublished. The ends of the ribbon widely apart and one passes closely beside A. Opening of wreath between E-S. Leaf on r. ends below base of T and points far outside of it. Single berry on r. back of C directly above point of leaf. Die badly cracked between E in UNITED and S, with the section carrying the letter D raised above the level of the other letters. And as it would be almost impossible to continue to use this die this fracture would account for its rarity and the fact that no other specimen has come down to us. Uncirculated. Magnificent impression with broad serratures and appears to be a light colored bronze proof. The finest and most perfect specimen in the collection and it is remarkable that it should happen to be the unknown die. See plate. *alt 15. diam 9. alt 75. Clam 115.*
- (S.H. Chapman)*
sold to
Mr R. Newsom
for \$150.-
by him in 7/44
see p. 11.
- 16) 2-446 1794 Hays 43. Fine. Light olive.
- 22-447 1794 Hays 44. Good. Very rare. *able 15. alt 20. Back 1. Deep 3.50 Clay 10.05 Cure 4.50*
Strong impression. Brown olive.
- 2.50 448 1794 Hays 45. Rev. die perfect. Fine. Surface lightly eroded. Light olive.
- 2.10 449 1794 Hays 45. Same. Rev. die perfect. Fine. *Clay 2.*

- Clay 1.50 450 1794 Hays 45. Fine. Battered around the edge. *Clay 1.50*
- Clay 12- 451 1794 Hays 46. Rev. No dividing line in fraction. Die perfect. Very fine. Brown olive color. Very rare. Plate. *Oct 4. Clay 12.85*
- able 7- 452 1794 Hays 46. Rev. die broken through D. Fine. Black. Very rare. Dent on forehead. Plate. *able 12. Clay 7.85*
- HC .45 453 1794 Hays 47. Very poor. Rare.
- C (SHC) 454 1794 Hays 48. Die perfect. Very good. Light olive. Very rare uncracked. *able 10.50 - cure 3.50*
- in name* 18- 455 1794 Hays 48. Die cracked from border diagonally through bust to hair. Rev. Crack from r. foot of N in ONE to E in CENT. Uncirc. A few mint nicks on face and nick on jaw. Proof surface. L. o. Plate. *Clay 14.55*
- 1923 EF to* 456 1794 Hays 48. Crack as before with another starting from it at right angles on the bust, extends to the top of 4 along the base of the bust and downwards through the 4. Rev. Cracked as before. Edge ONE HUNDRED A DOLLAR. Very fine. A deep, short nick on cheek near mouth. Steel color. Plate. *ret 14. Clay 50.45*
- to P.L. Hall* 457 1794 Hays 48. Fourth state of die. Lower crack extends from hair out to border. V. Fine. *Clay 14.55*
- C.E. Clapp to* 458 1794 Hays 49. Fine. Lt. brown olive color. Rare. *Clay 14.55*
- H.H. Clapp to A.S.* 459 1794 Hays 51. Obv. 51; Rev. 54. An unpublished combination. Fine. Light olive. Plate. *Clay 14.55*
- HC* 460 1794 Hays 52. Very fine. Light olive brown color. PLATE. *Clay 14.55*
- 1.25* 461 1794 Hays 52. Fine crack starts from border between R-T to head. V. g. Light olive brown color. *Clay 14.55*
- 37-* 462 1794 Hays 54. Uncirc. Sharp. Minute lumps on cheek are not nicks on the coin but were in the die. Fine crack from top of head to upper lip. Magnificent impression. Brown olive color. Very rare in this condition. Plate. *Clay 14.55*
- HC* .35 463 1794 Hays 54. Obv. good, rev. poor. Another, good, corroded. 2 pcs.
- able* 8- 464 1794 Hays 55. Good. Red corrosion on field. V. r. *Clay 14.55*
- unc* 3 465 1794 Hays 56. Faint crack in die between TR to forehead. Nick on throat. V. fine. Black. Plate. *Clay 14.55*

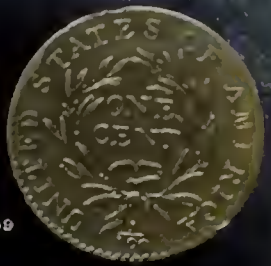
PLATE IV.



407



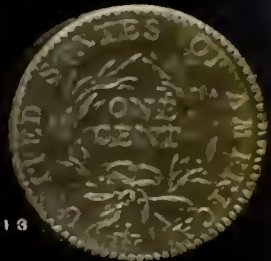
408



411



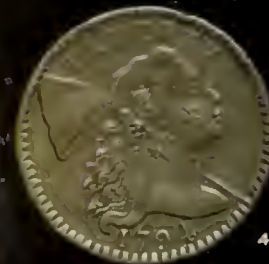
413



414



415



416



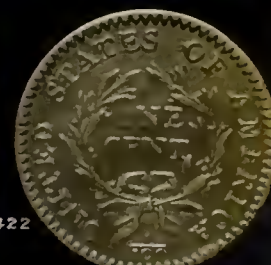
417



418



422



421



420



SARGENT COLLECTION.

PLATE V.



428



429



428



429



433



434



435



436



439



440



443



444



SARGENT COLLECTION.

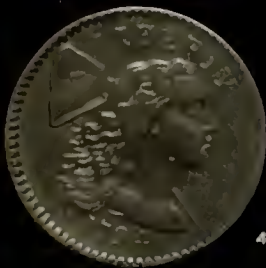
PLATE VI.



445



450



451



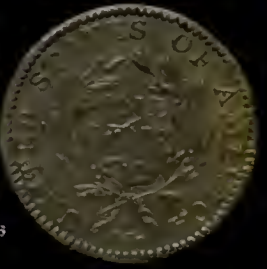
452



455



456



458



459



460



462



467



468



SARGENT COLLECTION.

- C*
(SHC) 2-466 1794 Hays 56. Crack more marked, a horn projects from forehead. Fine.
- Abt* 30-467 1794 Gilbert-Elder 58. Rev. 7. Very fine, except for red corrosion in field behind hair and on rev. on the letters UNIT and OF AMERICA and on tie of wreath. Excessively rare. Unknown to Frossard and Hays. Plate. *Abt 40. Deep 2. Clam 21-25.*
- Clam 80-* 468 1794 Gilbert-Elder 59, which on his plate is very poor almost obliterated, barely showing the date and back of head and LI. This specimen is extremely fine, has been cleaned a long time ago, the obv. now olive and red color and the rev. blue steel color. Of the highest rarity as it may be considered unique as the other specimen may be fairly considered destroyed. Plate. *Abt 50. Ult 75. Deep 2. Clam 85-90.*
- v. H.S. 1945-AP. 5*
- Clay 16-* 469 1795 Edge lettered. L touches cap, R distant from head and upright to l. of line of fillet; top of 5 half buried in bust. Rev. ONE CENT high in wreath. Very fine. Slight bruise in three places on obv. edge, and on four places in rev. edge. Very rare. Light olive color. From the Jones sale about 1880. Plate. *Coal 3. Clay 16.80 Cart 6.*
- to Charles E. Clapp 8/24*
George H. Clapp
- 2.30 470 1795 Same variety. Very good. *Coal 1.25*
- Clay 18-* 471 1795 Edge lettered. L distant from cap. R close to hair and upright to r. of line of fillet. Entire top of 5 against but visible underneath bust. Rev. ONE CENT in center of wreath. Very fine. Bruise on neck underneath old tone and not very noticeable. Lustrous olive surface. Very rare. Plate. *Cart 12. Clay 16.05*
- 43-472 1795 Thin planchet, plain edge. Larger letters in LIBERTY. L almost touches cap. Tip of 5 merges in bust. Border of broad serratures. Rev. ONE CENT high in wreath. Serrated border. Uncirc. Broadest border and most magnificent specimen I have ever seen. Size 18½. Plate. *Art 5. Clay 25.05*
- to H. H. 11/11/1885*
- Clay 8-* 473 1795 Same dies. Weak on RTY and rev. OF AMERICA. Beautiful lustrous light olive color. Unc. Plate. *Buy 2.50 Clay 8.65*

- C 14-474 1795 L far from cap and top of 5 entirely visible, the end just touches bust. Rev. ONE CENT in center of wreath. The border of serratures not struck up around lower half of rev. edge. Beautiful lustrous light olive surface. Plate. *Bay 2.00 Cont 4.*
- HC .55475 1795 Same. Slice off planchet above LIB. Good.
- Cont 20-476 1795 So-called "Jefferson head," from the head of Liberty being supposed to look like Jefferson. Contemporaneous struck counterfeit. Very fine. Faint scratches in r. field and nick on top of head. One of the finest known of this oddity. Plate. *Cont 20. Cur 16.50*
- Cont 5-477 1795 Same. Very good. Very rare. *Cur 6.50*
- Cont 24-478 1796 Liberty cap. Gilbert-E. Uncirculated, but not fully struck up on head and rev. ENT. Light olive with traces of red. V. r. in this state. Plate. *Clay 17.00 Clam 37.*
- Cont 4-479 1796 Gilbert-E. Fine. Black. *Abbe 4: Act 2. Coal 2. Club 3.85*
- 22-480 1796 Gilbert-E ^{6.00} Draped bust of Liberty to r. Rev. similar. Type 1796 to 1807. Uncirculated. Two fine parallel scratches close together 1/4 inch long in field behind head. Olive brown color partly red. Rare. Plate. *Act 2. Bag 3.10 Club 3. Clay 17.00*
- 10-481 1796 Bust. Gilbert 15. Very fine. Surface lightly eroded before head, and some smooth oxide between letters on rev. Rare. *Plate. 2.00 17.*
- Walker 7.25482 1796 Bust. Gilbert 2. Very good. *Coal 1.50*
- 37-483 1796 Bust. LIBERTY variety. Gilbert 9. Very fine. Brown color with traces of red. Very faint scratch on neck from ear to drapery. Face unusually well struck up. One of the finest specimens of this rare variety. Plate. *Abbe 16.50 Act 17. Bag 3.10 Box 2.50 Cont 25.00*
- Cont 5-484 1796 LIBERTY. Gilbert 10. Good. Very rare. *Cont 2.75*
- 17-485 1797 ER almost touches head. Last wave of hair between BE. Date evenly spaced, and last 7 almost touches bust. Rev. Fine delicate wreath. Lowest leaf on r. points to letter I. Opening of wreath between ES. Border of broad serratures. *act 3. Bag 5.10 Clay 2.64*

Uncirculated. Beautiful purple steel color with traces of original red. Plate.

- 1-486 1797 ER clear. Wave under heel of E. 1 distant from 7. Rev. same. Fine. Cleaned. D-104. *May 1. 25*
- 3-487 1797 Upright of R rests on hair. Top of cross and angle point of 7 touch bust. Point of 1 joins hair. Rev. Leaf points to letter C. Opening of wreath below r. side of S. Very fine. Olive color. Plate. *Coal 2.*
- 2-488 1797 LIBERTY distant above head. Date widely spaced and clear of bust. Rev. Lowest group of leaves on either side triplets as also third group on l. Broad serratures. Fine. Brown color. *Dec-1-70 May 2. 26*
- 2.75 489 1798 Small date. Extremely fine. Slight defect on planchet like small nick on temple. Brown, lustrous steel color. Plate. D-124 S-184
*to Ryker
to W. L. Raymond, Inc.
M.B.S. 11/45-86*
- 3-490 1798 Close huge date clear of bust. E over the hollow in wave of hair, and E and R very close to hair. Broad serratures. Fine. D-115. Plate. *Vol. 3.*
- 2-491 1799 over 98 Fair. Very rare.
- 34-492 1799 Perfect date. Very good. Shows the bottoms of 9's. LIBERTY and the whole Cent evenly and well struck. Black. Very rare. Plate. *afterwards cleaned & ruined by W. all corrected & now sold for 1/10 at quarter. see p. 100 in vol. 3.*
- 2.10 493 1799 LIBERTY good, lower part of date does not show. Rev. found traces. Poor. *Book 2.*
- 3.60 494 1799 LIBERTY out, date good, shows bottoms of 99. Very poor. *Book 2.*
- 3.25 495 1800 over 79 Extremely fine. Few minute nicks on face. Lustrous steel color. Plate. *Vol. 3. 2002-27*
- 2-496 1800 Perfect date. Very fine. Two deep nicks in field behind head. Brown steel color. Plate. *Oct 2. Clay 15
Nov 1. -1.40 Boy 1.50*
- 2-497 1801 Rev. 1/100. Fine. Brown color.
- 1-498 1801 Rev. 1/100. Die broken over R. Fine. Brown. *Book 1.*
- 1-499 1802 Date distant from bust and curl. Crack from L to R in LIBERTY which is not struck up. Rev. 1/100. Opening of wreath under E. Stem r. points

between feet of A. Die cracked from sr through space between S-0. Very fine. Black.

- C (SHC) 2-500 1802 Top of 1 close to curl. Die cracked from R through fore-lock to r. border. Rev. Opening of wreath between E-S. Stem points to l. foot of A. Leaf passes over foot of T and nearly touches top. Fine. Brown.
- Clay 8-501 1803 Small date. E exactly spans hollow in top lock. Rev. Small 1/100. Leaf touches top of T. Uncirculated. Magnificent, strong impression. *Clay 9.05*
Small slight scratch on neck. Olive steel color, *Sept 7.50*
partly bright red. Rev. Light greenish olive. Pl. *Bag 3.10*
- Clay 1-502 1803 Last wave under middle of E. 1 close to curl, S touches bust. Rev. Leaf r. just joins foot and reaches half way up T. Small break in die bet. stem and second leaf from the top outside l. branch. Fine. Brown color. *Clay 1.05*
- Clay 1.50 503 1803 Wide space between E-R. Corner of 3 merges in bust. Fine crack starts at l. border, passes in a curve through ribbon downwards bet. 8-O. Rev. Large fraction. N in CENT above line. Very fine. Brown color. *Clay 1.05*
- C (SHC) .20 504 1803 Same obv. as No. 2. Rev. Large fraction with short bar. Leaf points outside of top of T. Very good. D-197.
- Club 8-505 1804 Die perfect. Good. Very rare. *Bag 3.10 Coal 5.50 Club 2*
- Johns 7-506 1804 Die perfect. Dent on head. Good. Very rare.
- C (SHC) 4-507 1804 Die perfect. Good. Eroded on head and edge.
- C (SHC) 11-508 1804 Die broken over RTY and from middle of M to C. Very good. Very rare. *Coal 7.50 Bag 4.0 Coal 3.50*
- Cent 8-509 1805 Small LIBERTY as in 1804. Blunt 1. Double cut 5. Rev. Extremely fine. Splendidly strong impression. Mottled light brown and black. Rare. D-199. Plate. *Coal 2. Coal 3.50 Cent 10.*
cleaner reverse
- Asselin 6.50 510 1805 Same. Very fine. Light olive. *Coal 1.50 Dena 2.10*
- HC 2.40 511 1805 Same dies, but the double cutting of the 5 removed from die. Fine. Olive color. D-200. *Coal 2.25 Coal 1.*

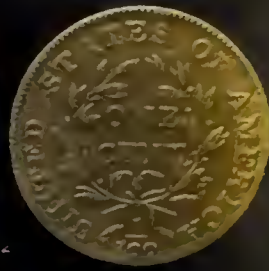
PLATE VIII.



490



492



493



501



509



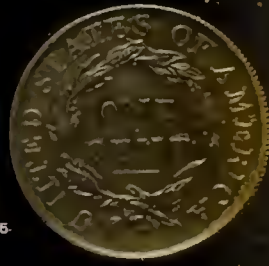
512



524



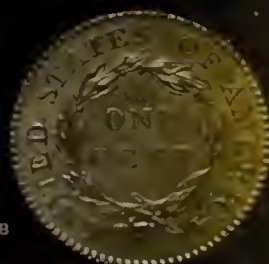
525



556



558



SARGENT COLLECTION.

- Cart* 6-512 1805 Large letters in LIBERTY and pointed 1 up against curl. Rev. T in CENT without r. foot and the leaf distant. Very fine. Light olive. Rare. D-201. Plate. *Cure 4. Clay 2.05 Cart 7. Dies .85*
- HC* 10.50 513 1806 Extremely fine. Slightly weak as usual. Really uncirculated. Light olive brown color. Plate.
- Club* 3.20 514 1806 Very fine. Light brown color. *Box 1.25 Club 3.10 Dies 2.10*
- 1.60 515 1806 Very fine, but border retooled and has been cleaned. *Club 1.50*
- C* 5-516 1807 over 6. LIBERTY weak as always. Rev. Small fraction. Crack from first leaf on r. to C. Very fine. Light olive. Very rarely seen so fine. *Clay 2.87*
- (SHC)*
- Dense* 2-517 1807 Perfect date. Fine. Black. D-207. *Club 1.50 Dense 2.0*
- C (SHC)* .50 518 1807 Same. LIBER very weak. Fine.
- Clay* 5-519 1808 Head to l. bound with ribbon on which LIBERTY. Rev. ONE CENT, below bar, within continuous wreath made with one branch of olive. Rev. Point of highest leaf terminates below the center of the final S of STATES. The lowest star at point of bust invisible, thus commonly called "the 12 star variety." Extremely fine. Light brown color. Plate. *Act 2. Coal 4. Clay 15.05*
- C (SHC)* .50 520 1808 Another. Same. V. g. Merritt sale 1880.
- Dense* 2-521 1808 All stars equally struck. Fine. L. o. D-208. *Coal 1.00 Dies 1.00*
- HC* .30 522 1808 Same. Very good. Brown. D-208.
- Dense* 2-523 1808 Rev. Leaf terminates at r. side of S. Fine. Black. D-209. *Dense 2.10*
- 115-524 1809 Over 8 as all. Uncirculated. All stars show center line. Most beautiful, lustrous, olive steel color with traces of original red, without a spot or mark. The edges of ear and hair absolutely unworn in the slightest degree. Plate VIII. *Clay 2.05 Dies 2.00*
- Wentzback*
- East* 80-525 1809 Uncirculated. Weak. Edges of the hair not struck up, stars do not show center line. Nick on edge. Lustrous light brown color. Very rare. *alt 1 C. Bag 4.*

- Coal 5.50 526 1809 Very fine. Date, two stars l. and stars behind head and border on both sides strongly struck but five stars before face very weak. Dark green patina. *Coal 5.*
- Walt 2.60 527 1809 Evenly struck, stars not struck up as usual. Fine for this state. Brown color.
- C(SHC) 2-528 1809 Very good. Bruise on edge. Rough black surface.
- Box .75 529 1810 Fine. *Box .75*
- Coal 2-530 1811 Over 10. Very fine. Black. *Coal 2. Dense 2.10*
- Dense 2-531 1811 Perfect date. Fine. Brown. Rare. *Coal 1.50 Dense 2.10*
- .75 532 1811 Very good. Surface eroded. *Coal .75*
- Dense 1.60 533 1812 Very fine. Large date. Steel color. D-217. *Box 1.50 Dense 2.10*
- C(SHC) .50 534 1812 Large date. Fine. Brown color. D-217.
- C(SHC) .20 535 1812 Small date. Very good.
- Box 1.50 536 1813 Fine. Brown color. *Box 1.50 Dense 2.10*
- Clay 3.50 537 1814 Crossed 4. Extremely fine. Strong impression. Small nick on chin. Red brown color. *Clay 3.85 Dense 1.05 Box .75*
- Clay 3-538 1814 Plain 4. Extremely fine. Slight rough streak in field before face. Olive color. *Plate. Clay 3.88 Dense 1.05*
- Clay 1.11 539 1814 Plain 4. Small speck out of die under angle of the jaw. Very fine and has been cleaned. *Clay 1.15*
- C(SHC) .20 540 1814 Die broken under chin. V. g. Rev. Fine. Note.—None struck in 1815.
- C(SHC) .50 541 1816 Widely spaced date. Perfect die. Fine. L. o.
- Act 1-542 1816 Closer date. Second 1 very heavy and broad. Die broken on border behind head. Unc. L. o. *Act 1.50 Clay .85*
- Act .85 542 A *James Barber, impresser. Bright red. Unc.*
- Act 2-543 1817 Thirteen stars. Date spaced thus 1 817. Star points to edge of diadem. Star behind head almost touches hair on bend. Extremely fine. Beautiful light olive color. Two tiny nicks on cheek. *Act 2. Brave .75 Clay .85*
- 1.75 544 1817 Same die after small break forming a knob on top of the head. Very fine. Light olive. *Abbe 1.50 Cure 1.25*
- 1.15 545 1817 Evenly spaced but 81 leans to l. Star points inside diadem and star behind distant. Very fine. Light olive.
- 11-545 A 1817 Spaced date; 1 817. Unc. Bright red. Stars flat as usual.

- Clay 5-546 1817 Fifteen stars. Uncirculated. Lustrous olive steel color with traces of red. Rare. *Act 2. Bag 3.10 Box 1. Clay 7.5*
- act 1.21547 1818 Perfect date. Spaced thus 181 8. Uncirculated. Strong impression. Stars before face, last two on r. are not up. Orange olive color. *Box 1.05 Act 1.50 Bag 50 Clay.*
- act .75548 1818 Evenly spaced. Wide date. Die cracked through stars. Stars weak as usual. Uncirculated. Bright red. *Act 1. Clay. 55*
- act .75549 1818 Another specimen. Similar. Uncirculated. Bright red. *Act 1.*
- C(SHC) .10550 1819 Large date. Fine. Light olive.
- aim 1.25 551 1819 Small date. Uncirculated. Red. *Act 1. Aim 1-1.25 Coal 1.*
- act .70 551A *Same. Spots on border.*
- act 1.50 552 1819 Spaced thus 1 81 9. Uncirculated. Strongly struck border. Light olive with traces of red. Black nose. *Act 1. Brail 1.25 Coal 1. Clay. 56*
- Simpson
- act .80 553 1820 Cracked die. Large 0. Uncirculated. B. r. *Act 1.*
- C(SHC) .21 553A *Same. Dark spot near left.*
- act .50 554 1820 Same. Large 0. Uncirculated. Lustrous l. o. *Act 1.*
- act 3-555 1820 Perfect die. Small date. Stars before face weak. Others not centered except last as usual. Uncirculated. Bright red. Very rare state. *Act 3. Eng. 80 Act.*
- C 20-556 1821 Large date follows the curve of border; 1's heavy; star behind head almost touches hair; inner line around upper part; stars large and deeply cut in die. Rev. heavy letters particularly noticeable compared with specimen below in ONE CENT. Wreath far from letters, leaf terminates under opening in A. Uncirculated. Steel olive color. Magnificent, strongly struck specimen. Very rare state. From Wilson sale 1907. Plate. *Bag 3.10*
- (SHC)
- aim 2-557 1821 Same dies. Fine. Brown color. *Aim 2.-2.56 Box. 50 Coal 1. Same 1.*
- 25-558 1821 Small date nearly horizontal. Different hub to above. Rev. fine letters far from border and close to wreath; last leaf terminates under l. foot of A. Uncirculated. Beautiful light olive color. Very rare—the rarer variety. Plate. *Act 3. Bag 3.10 Cur. 8.50 Clay 18.85*
- Wurtzback
- HC 3.75559 1822 Extremely fine. Beautiful, light, orange olive. *Act 2.*

- Dence 1.50 560 1822 Wide date. Very fine. Steel color. *Box 1. Dence 1.50*
- Hines 3.40 561 1823 Over 2. Fine. Steel color. Rare. *able 3. Coal 2.50*
- Coal 1-562 1823 Over 2. Very good. Rare. *Coal 1.*
- 190-563 1823 Perfect date. Uncirculated. Light yellow
Wurtzback olive. Excessively rare in this condition. Only
one other specimen known of the perfect date in
uncirculated condition, which was in our Mills sale
1904 and previously in the Winsor sale and which
sold for \$175 and \$190, respectively. Plate. *act 30. Clay 126.
Bag 5.10*
- Elder 4.50 564 1824 Over 2. Unusually strongly struck border.
Extremely fine. Brown color. Rare. *able 4. Cart 4. Clay 7.58*
- 7.50 565 1824 Spaced thus 18 24. Extremely fine. Upper
stars flat. Light olive. *Box 2. Coal 2.50 Clay 2.15*
- able 1.50 566 1824 Same die. Fine. Nick bet. two upper stars. *able 1.50 Dence 1*
- .80 567 1824 Wide, evenly spaced date. Fine. Brown color. *Coal. 75*
- Ryder 49-568 1825^p Uncirculated. Magnificent impression. Light,
orange, olive color. Proof surface. See plate. *act 2. Bag 4.10
Clay 6.55 Coal 4*
- 1.50 569 1825 Same die. Very fine. Black. Scarce. *aim 1.-1.75 Coal 1.50*
- 3.75 570 1825 Different die. Star distant from back of
Wurtzback head. Close date. Uncirculated, except slight
nicks on cheek. Border off on l. side. Lustrous
golden surface. Scarce. *act 1.50 Bag 2.10 Clay 2.55*
- Hines 2.60 571 1826 Uncirculated. Date close to border, and 182
tumbling together at the top. Weak rim. Beautiful,
light yellow olive. *act 1.50 Bag 2.10 Clay 2.35*
- coal 1-572 1826 182 in line, 6 high. Equidistant from bust and
border. Point of star behind head touches hair.
Very fine, been cleaned. *Coal 1.*
- 7-573 1827 Close date equidistant from border. Star
Wurtzback behind head clear of hair. Uncirculated. Bright
red. Stars sharp. Proof surface. Splendid speci-
men. *Bag 3.10 Coal 3. Clay 6.55*
- 1.20 574 1827 More widely spaced date and 1 distant. Very
fine. Light olive. *Coal 1. Clay 1.15*
- 1.50 575 1827 Date close to border, and head much nearer
also. Larger, heavier stars. Rev. U and A close
to ends of wreath and center mark plainly marked

whilst in the two preceding it is barely visible, and letters are closer to wreath. Very fine. Light olive. *Cart 1.25 Clay 1.25*

- Clay* 2-576 1828 Large date. Very fine. Light olive. *Clay 3.85 Dense*
- Elder* 9.50577 1828 Small date. Extremely fine. Lt. olive color. Very rare in this condition. See plate.
- C(SHC)* .30578 1828 Small date. Very good. Rare.
- .70579 1829 V. f. Strong impression. Orange olive color.
- C(SHC)* .25580 1829 Close date. Star points inside of diadem. Fine. Light olive.
- 34-581 1830_N With inner line. Brilliant proof. Bright red. *PLATE.*
- Berkwith* Excessively rare in this condition. *Act 2. Bag 5.10 Coal 5. Clay 10.0*
- 1.10* 582 1830 Inner line, but lower border off. Stars all struck up except three lower on l. V. fine. Brown color.
- 4-583* 1831 Wide date close to border, cracked around all stars which are sharp. Rev. Large letters. Uncirculated. Strong impression. Light olive. *Bag 2.20 Clay 2.*
- .15584 1831 Close date. Rev. Small letters. Very fine. Light olive.
- 2.20585 1832 Double profile. Rev. Large letters. V. f. L. o. *able 2.*
- Clay* 2.05586 1833 Star points far inside diadem. 1 high. Uncirculated. Light olive. Stars to l. not up. *Act 2. Clay 2.05*
- Dense* .40587 1833 Horizontal date. Star behind head touches. Very fine, cleaned. *Dense .40*
- Clay* 1-588 1833 Star points to edge of diadem. Curved date. Extremely fine. Light olive. *Clay 1.06*
- act* 1.40589 1834 Small, close date. Uncirculated. Olive steel color. *act 1.50 Clay 1.35*
- C(SHC)* .50590 1834 Same die. Very fine. Light brown olive.
- C(SHC)* .50591 1834 Small, wide date. Different rev. V. f. L. o.
- Cure* 1-592 1834 Large date, 18 up out of line. Stars smaller, flat, connected by a break. Very fine. Olive. *Cure 1.25*
- Cure* 1.25593 1834 Large date. Very small stars. Very high rim. Crack starts below 4 passes through 2 stars r. Very fine. Brown. Rare. *Cure 1.50*

- Clay 1.25 594 1835 Low diadem with blunt point. Small head. Extremely fine. Brown color. *Coal .75 Clay 1.25*
- 1.50 595 1835^A Tall, pointed diadem. Small crack through 1. Uncirculated. Bright red. Rare state. *Bag 2.60 Coal 1.50 Clay 3.05*
- Back with
Club 1- 596 1835 Same. Fine. Light olive. *Club 1.20 Denver .45*
- C
(SHC) .50 597 1835 Blunt diadem. Large stars. Curved date with large 8. Fine. Slightly bent. Scratch over head. Bronzed.
- act 1- 598 1836 Curved date. Unbroken. Lower stars not up. Unc. Olive. *act 1.50 Clay .85*
- 1.70 599 1836 Curved date. Border broken opposite point of diadem. Uncirculated. Beautiful light olive. Nick on cheek. *act 1.50 Clay .85*
- .25 600 1836 Horizontal date. High rim. Very fine. L. o.
- (SHC) .10 601 1836 High 1. Die broken bet. 7th and 8th star. V. g.
- .10 602 1837 Plain hair cord. Uncirculated. Olive steel color. *act 1.50 Cov. .55 Coal .50*
- act 1- 603 1837 Uncirculated. Beautiful yellow olive color. *act 1.50 Coal .75 Clay .95*
- rev. 2.50 604 1837^A Beaded hair cord. Uncirculated. Sharp. Magnificent impression. Fine crack in die before ear to point of bust. *act 1.50 Unc 2.75 Bag 2.10 Coal 1. Clay 1.55*
- .10 605 1837 Same. 1 more slender. L further from edge of diadem and 13 joined at bottom. V. f. Olive color.
- act 1- 606 1838 Uncirculated. Upper stars weak. Bright red. *act 1.50 Coal 1. Club .40*
- .10 607 1838 Same. Fine.
- .65 608 1839 Over 6. Fine. Brown color. Rare. *unc 5.50 Cent 3.75 Sell 5.*
- HC 2.10 609 1839 Head of 1838. Uncirculated. Stars flat. Weak but head sharp. Lustrous purple color. Beautiful cent. *act 2. unc 2.50 Coal 1.50 Clay 5.05 Dish 2*
- act 1- 610 1839 Silly head. Very fine. *act 1. aim .75*
- Clay 4- 611 1839 Booby head. Uncirculated. Stars weak. Bright red. *act 1. aim .80 Coal 1.50 Clay 4.05*
- Coal .40 612 1839 Booby head. Very fine. Cleaned. *Coal .40*
- HC .10 613 1839 Head of 1840. Very fine. Short scratch on rev.
- Coal .40 614 1840 Small date. Very fine. Cleaned. *Coal .40*

y	2.20	615	1840	Large date. Uncirculated. Stars sharp. Die broken on edge behind head. Below date small place on edge which did not come up fully in the die. Beautiful, lustrous, light olive, steel color.	act 1.50 Clay 2.10 Bag 2.10 Coal 1.50
ay	8-	616	1841	Brilliant proof. Bright red. Very rare state.	act 2. Coal 2.50 Clay 8.00
u	2.50	617	1841	Uncirculated. Light, brown olive color. Scarce state.	act 1.50 Coal 3. Bag 1.75 Coal 2. Coal 1.
uy	1.70	618	1842	Small date. Uncirculated. Obv. pink. Slight scratch below head. Rev. Lustrous, pale, olive color.	act 1.50 Coal 1. Clay 2.15
(HC)	.10	619	1842	Large date. Very fine. Bronzed.	
t	1.50	620	1843	Uncirculated. Obv. red and steel. Rev. mostly bright red.	act 1.50 Coal 1.50
al	.50	621	1843	Very fine. Bronzed.	Coal 1.50 Coal 1.50
HC)	.50	622	1843	Stars close to head and broad rim. Rev. large letters and broad rim. As continued to the end of the series. Very fine. Brown.	
se	1.50	623	1844	Uncirculated. Light olive.	act 1. Bag 1.20 Brass 1.50 Coal 1.50
il	.45	624	1844	Extremely fine. Brown color.	Coal .60 Dense .30
t	.75	625	1845	Uncirculated. Light olive.	act 1. Dense .30
se	.30	626	1845	Extremely fine. Brown color.	Dense .30
	.45	627	1846	Large date. Very fine. Bronze.	Dense .30
re	1.50	628	1846	Tall date. Uncirculated. Smoky brown color.	act 1. Dense .30 Brass 1.60 Clay 1.15
t	1.-	629	1847	Uncirculated. Bright red.	act 1. Clay .35 Dense .30
(C)	.50	630	1847	184 touches bust. Uncirculated. Red.	Dense .30
se	.30	631	1848	Uncirculated. Light olive.	Dense .30
back	14-	632	1848	Brilliant proof. Red. Very rare.	act 1. Coal 3.50 Dense .30
t	1-	633	1849	Uncirc. Bright red. Slight spots above head.	act 1. Brass .55 Coal .75
re	.60	634	1850	1 out beyond bust. Unc. Lustrous olive color.	Brass .50 Dense .30
t	.60	635	1850	1 under bust. Uncirculated. Brown color.	act 1. Dense .30
t	.70	636	1851	Uncirculated. Brilliant bright red.	act 1. Dense .30
t	.80	637	1851	Brilliant bright red. All stars sharp.	act 1. Coal .75
t	.75	638	1851	Uncirculated. Bright red. All stars centered.	act 1.
t	.60	639	1852	Unc. Bright red. Different die.	2 pcs. act 1. Brass .55
t	.60	640	1853	Uncirculated. Bright red.	act 1. Clay .55
t	.60	641	1854	Uncirculated. Bright red.	act 1. Coal .35
t	.50	642	1855	Vertical 5. Uncirculated. Bright red.	2 pcs. act 1.

<i>Dence</i> .50	643	1855	Slanting 5. Knob over ear. V. f. Light olive.	<i>Dence</i> .50
C (SHC)	.10	644	1856	Uncirculated. Red and partly red. 2 pcs.
C (SHC)	8-	645	1856	Brilliant proof. Bright red. <i>Act 1. Coal</i> 2.50
	.80	646	1857	Large date. Uncirculated. Red. <i>Clay</i> .65
	5-	647	1857	<i>Small date</i> Brilliant proof. Bright red. Rare. <i>Act 1. Coal</i> 3.50
<i>Bag</i>	.60	648	1857	Small date. Uncirculated. Light olive. <i>Bag</i> 1.30 <i>Clay</i> .55
	.05	649	1793	Broad leaves in spray, C-7-F, to 1857 lacking
<i>Beckwith</i>			1799 and 1804. Poor to good, general average good. Each piece up to 1814 is tagged with number according to Doughty. 1794 to 1808, 32 pcs. 1808 to 1814, poor to good, 15 pcs. 1816 to 1840, 69 pcs. Poor to fine. 1840 to 1849, 32 pcs. Fine. 1849 to 57, very fine to unc. 36 pcs. None damaged.	186 pcs. <i>Back</i> .05
HC	9.20	650	1856	Eagle. Nickel copper. Uncirculated. Rare.
Coal	.05 1/2	651	1857 to 1888	Uncirculated except 1869, 70, 1, 7, 8, which are fine. Lacks 1866, 7. 30 pcs. <i>Coal</i> .05 <i>Back</i> .02 1/2
Coal	.04	652	1859 to 1888	Various dates. Uncirc. 27 pcs. <i>Back</i> .02 1/2 <i>Coal</i> .04
Coal	.05	653	1857, 8	Nickel copper cents. Good to uncirculated. 9 pcs. <i>Coal</i> .05
Coal	.03	654	1859 to 1864	Nickel cents. V. g. to uncirc. 22 pcs. <i>Back</i> .02 1/2 <i>Coal</i>
	.04	655	Two Cent Pieces 1864 (2), 65 (2).	Unc. 1866-71. 10 pcs. <i>Back</i> .05
<i>Beckwith</i>			Fine.	
"	.03	656	1864 to 72	Various dates. Fine. 30 29 pcs. <i>Back</i> .04
"	.04	657	Three cent nickel. 1865-1883.	Various dates. Good to uncirculated. 25 pcs. <i>Back</i> .04
C (SHC)	.06	658	Five cents nickel. 1866-1876.	67 with and without rays. Fine to uncirculated. 12 pcs.
C (SHC)	.05	659	1866-76	Various dates. Good to uncirc. 13 pcs.
	.35	660	1883	Small proof set with three five cents.
C (SHC)	.05	661	1837	Tokens. Very good. 11 pcs.
C (SHC)	.02	662	1861-66	Rebellion tokens. 1 pierced. Fine. 18 pcs.
HC	.01	662a	Canada. Montreal. Bouquet (2).	Male bust r. Rev. Harp, above which 1820. Brass (4). Good. The last fine. 7 pcs.
	.13	663	1813, 1814	Lion half penny. Rev. Britannia seated within wreath. Uncirculated. 2 pcs. <i>Back</i> .11

HALF CENTS.

<i>Clay</i> 5-664	1793	Head of Liberty to l. with pole on which cap over shoulder. Die in which line of nose points to B. Rev. UNITED STATES OF AMERICA HALF CENT within wreath; below 1/200. Fine. Olive, brown color. Rare. <i>Act 4. Box 3. Clay 5.05</i>	
<i>Count</i> .70	665	1794	Large head in low relief. Very good. <i>Count. 95</i>
<i>C (SHC)</i> .10	666	1800	(2) 1 pierced. 1803. 3 pcs.
<i>act</i> .60	667	1804	Uncirculated. Obv. Bright red. Rev. olive. <i>Act 2. Clay. 50</i>
<i>HC</i> .10	668	1804	Very fine. Cleaned. 5 pcs.
<i>Count</i> .10½	669	1805, 6 (3), 9 (2), 10, 25 to 1854.	Very good. 22 pcs. <i>Each .08</i>
<i>act</i> 1.30	670	1806	Uncirculated. Dull red. <i>act 2.</i> <i>Count. 10½ Coal. 10</i>

PATTERN PIECES.

<i>Bake</i> 60-671	1836	Gold Dollar. Cap of Liberty surrounded by glory of rays. On the cap LIBERTY. Rev. UNITED STATES OF AMERICA 1836. Within palm branch 1 D. Edge plain. Brilliant proof. Short scratch from one ray to border. Very rare. A. & W. 50. R. 10. <i>Bake 70. Chief 7.50</i>	
<i>act</i> 21-672	1836	Dollar by Gobrecht. Liberty seated r. GOBRECHT on base; exg. 1836. Rev. UNITED STATES OF AMERICA. ONE DOLLAR. Eagle flying amidst 26 stars. Edge plain. Proof. Slightly hair-marked and rubbed on the head and breast. Two slight edge dinges on obv. edge behind rock. Rare. A. T. W. 42. Plate IX. <i>act 25.</i>	
<i>HC</i> 5.75	673	1836	Same. Good. <i>act 5.</i>
<i>act</i> 300-674	1838	Dollar. Same with 13 stars around field, and without signature on base. Rev. same without stars in field. Edge milled. Brilliant proof. Small, shallow depressed spot about half the size of a star in field near second star from head—in planchet before striking. V. Rare. A. W. 62. Pl. IX. <i>act 25. Chief 25.</i>	
<i>C (SHC)</i> 52-675	1839	Dollar. Same proof. Slightly hairmarked in r. field and on reverse. V. rare. Plate IX. <i>act 25. Chief 30.</i>	

- C 55-676 1865 Dollar. Liberty seated, surrounded by thirteen stars, below date. Rev. UNITED STATES OF AMERICA ONE DOL. Eagle as on regular type. Above on scroll IN GOD WE TRUST, the motto first adopted in 1866. Proof. Excessively r. A. & W. 490. R. 12. Plate IX. *Bake 40.*
- Bake* 20-677 1870 Dollar. By Longacre. Liberty as Indian queen seated to l. on globe, behind her back two flags—the design in high relief; surrounded by thirteen stars; exg. date. Rev. 1 DOLLAR within composite wreath; above STANDARD. Edge plain. Excessively rare. A. & W. 851. R. 13. Plate IX. *Bake 40. Chief 5.*
- Bake* 15-678 1870 Dollar. By Barber. Liberty seated on l. holds shield in r. hand and in l. olive spray. Rev. as regular series. Edge plain. Extremely rare. A. & W. 871. R. 13. Plate IX. *Bake 15. Chief 5.*
- Bake* 20-679 1871 Dollar. By Longacre. Similar, but different model. The face and head smaller and more of Indian type. Design in high relief. Without stars in field. Rev. Same as above. Reeded edge. Proof. Excessively rare. A. & W. 1098. R. 13. Plate IX. *Bake 15. Chief 5.50*
- Bake* 40-680 1872 Commercial Dollar. By Longacre. Same design as 1870 but slightly smaller. High relief. Rev. UNITED STATES OF AMERICA. Olive wreath enclosing COMMERCIAL, double cornucopia, DOLLAR.—420 GRS-900. FINE.—. On ribbon of wreath GOD WE TRUST. Edge reeded. Proof. Extremely rare. A. & W. 1248. R. 12. Plate IX. *Bake 40. Chief 2.50*
- Sisk* 20-681 1873 Trade Dollar set. 6 different designs. Edges reeded. Proofs. *Push 19. Set 12.* 6 pcs.
- Bake* 26-682 1873 Same. Plain edge. Extremely rare with the plain edge. A. & W. 1297. R. 13. *about 1.75 Bake 4. (each)*
- C 5-683 1878 Dollar. By Barber. Head of Liberty l. wearing diadem on which LIBERTY. Above in field IN GOD WE TRUST; around thirteen stars, below date. Rev. Eagle standing with open wings, defiant. Above, E PLURIBUS UNUM. Edge reeded. Proof.

PLATE IX.



676



677



678



679



680



681



SARGENT COLLECTION.

20-684 1878 Dollar. By Morgan. Head of Liberty to l. wearing cap, and diadem, encircled by composite wreath, last point of which is a single grain and is equidistant bet. R and I. The back edge of the upper part of L disappears over the edge of the head. Rev. *UNITED STATES OF AMERICA * ONE DOLLAR; within olive wreath Eagle with upraised wings, bears olive branch with three leaves in r. and three arrows in his l. talon; seven feathers in the tail which has natural ends; in script, *In God We Trust*, close to wings. I touches and T almost; stars before U and after A, large and flat. Ends of wreath almost touch wings. Edge reeded. Proof. Excessively rare. Not in A. & W. This piece has been known to be excessively rare since the time. Plate IX. *Bake 50.*

10-685 1878 Dollar. By Morgan. Same designs. The wreath terminates in coarse wheat-ear with two grains at end and the ear touches R. L well within ribbon. Rev. IN GOD WE TRUST far from wing; tail of eagle trimmed. The leaves in the wreath smaller and star in inscription smaller and with lines to center. A. & W. Reverse. 1559, but different obv. die to either given by A. & W. as neither of theirs touch R. *Bake 50.*

In a conference today, June 6, with the artist, Mr. George T. Morgan, he kindly informed me that "this die with the deep serratures inserted by hand and with the feathers of the eagle's wing continued on the under edge to the body was the first model, and that he subsequently, in deference to the idea and wishes of the Committee on Coinage, changed the arrangement of the feathers so as to leave a gap in the under edge between the feathers and the body." Mr. Morgan also stated that "he made minor changes in several different

models and believed this first model to be the rarest, but could not now recall how many were struck from each die."

- aim* 35-686 1879 Four Dollars or Stella. Gold. With ring and small scroll attached to edge. Fine. Rare. Plate I. *aim 25-45. Cart 20.*
- Dish* 3.50 687 1879 Goloid Dollar. By Barber. Head of Liberty l. wearing pointed diadem. Proof. Rev. in center 895.8 S. 4.2-G. 100-C. 25 GRAMS. A. & W. 1598. R. 6. *Dish 3.85*
- 1.20* 687 A 5 C. *encased stamp, Burnett's. Very fine.*
- Simpson*
- Count* .75 688 Alexander the Great. B. C. 336-323. Head as Herakles r. Rev. Zeus seated. Tetradrachm. Good. *Count. 75*
- HC* .15 689 James VI. Scotland. 1598. Shilling. Fair.
- HC* 5- 690 George III. Spade Guinea. 1792. Attached to loop in brackets. Good.
- Babe* 4.50 691 George IV. 1822. Colonial Half Crown. Anchor, crowned. Rev. Shield. Proof. Edge milled. Rare. *Babe 3.50 Dish 1.85*
- 1.30* 692 George III. 1804. Dollar. Bust r. Rev. Bank of England 1804. Fine.
- 1.70* 693 Frankfurt. 1861. Female bust r. 2 Thaler. V. fine.
- HC* 10.75 694 Charles II. Double Sovereign. Bust r. beneath which elephant. Rev. 4 Shields. Crown. 1864. F.
- C(SHC)* 5-695 Anna. Bust l. Rev. Same. 1719. Sovereign. Fine. Faint scratches on neck.
- C(SHC)* 2.40 696 George III. 1809. Half Sovereign. Fine.
- HC* 1.50 697 George III. 1804. 1/3 Sovereign. Fine.
- HC* 1.10 698 Victoria. War medal. AFGHANISTAN. Bust veiled and crowned l. Rev. Elephant and cavalry. Bars, KANDAHAR, KABUL, CHARASIA. Edge, MALONEY, 92 ND HIGH'RS.
- C(SHC)* 1- 699 Victoria. Egypt. Head l. veiled. Rev. Sphinx. 1882. Bar ALEXANDRIA 11 TH JULY with ribbon. Edge H.M.S. "SULTAN". Fine.
- HC* .30 700 Napoleon III. Head l. in wreath. Rev. CAMPAIGNE D'ITALIE. Uncirculated.

FOREIGN COINS.

- Dime* 18-701 Sweden. Plate money. Charles XII. 1717. 2 Daler. Die stamp in each corner and centre. 8 by 6¾ in. Wt. 3 lb. 5 oz. Fine. Has an extra stamp, lion rampant on shield. 17-18. Rare. *Brink 7.60 Care 6. Dist. image*
- Dime* 9-702 Same. 1716. Half Daler. Wt. 11 oz. V. good. Rare. *Brink 3.25*
- 18-703 Frederick. 1745. 4 Daler. 9¾ by 8½ in. Wt. 6 lb. 3¼ oz. Fine. *Care 6. Care 3. Dist. image*
- 6-704 Same. 2 Daler. 1736. 7¼ by 7¾ in. Wt. 3 lb. 2 oz. Polished with stove blackening which can be washed off. *Brink 3.50 Care 4.*
- 705 Same. 1 Daler. 1724. Wt. 27 oz. Fine. Field slightly eroded. *Care 3.*
- 3.50 706 Same. 1729. Wt. 27½ oz. Fine. *Brink 3.50 Care 3.*
- 4-707 Same. ½ Daler. 1735. Stamps fine, 2 cracks in from edge. Wt. 9 oz. *Care 2.*
- 3-708 Same. 1739. Fine. Half Daler. 14½ oz. *Care 2.50 Dist. 1.85*
- 3.50 709 Adolphus Frederick. 1763. 1 Daler. Stamps fine. Surface somewhat eroded. 5½ by 5¼. Wt. 22½ oz. Rare. *Care 2.50*
- Beck .01* 710 Foreign copper coins. Various. Good. 73 pcs. *Beck .01*
The following coins were found at Harpoot, Syria, and are sold for the benefit of the mission there:
- 711 Byzantium. B. C. 400-350. Bull standing on dolphin. Rev. Windmill sail punch-mark. Drachm. Fine.
- HC* 712 Cilicia. Mazaios. B. C. 361-333. Baaltars seated nude to hips, lower part draped holds eagle on r. and long sceptre in l. below throne to r. Rev. Lion on back of bull. Stater. F. Deep test cut on edge.
- .10 713 Greek Drachms. Aenus, Phocis, Argos, Histiaea, Alexander the Great, Alexander of Syria, Sicyon, etc. Good. 3 pierced. 21 pcs.
- HC* .40 714 Istrus. B. C. 300. Female heads side by side upside down to each other. Rev. Eagle on dolphin. Di-drachm. Good.
- C (SHC)* .10 715 Seleucus. Syria. Bust of Pallas r. Rev. Victory crowns anchor. Copper. Fine.

- Elden* .08 716 Roman Republic. B. C. 200-50. Denarius. Good to poor. 13 pcs.
- C(SHC)* 1-717 Marc Antony and his first wife, Octavia. Heads jugata. Rev. Cistus and serpents. Tetradr. Good.
- Elden* .09 718 Roman Empire. Augustus to Gordian. Various, and one of the 13th century. Denarius. Good. 2 pierced. 25 pcs.
- HC* .45 719 Theodosius the Great. Bust to r. VOT-XX-MVLT XXX in wreath. Quinarius. Ex. fine.
- Count* .25 720 Armenia. Leo. About 1080-1375. Lion bearing cross on back. Rev. King on horse r. Silver dinar. V. g. *Count. 25*
- HC* .01 721 Same. Base penny and copper pieces. Various. Poor. 10 pcs.
- HC* .01 722 Mohammedan Arabic, Cufic coins. Copper. Poor. 12 pcs.
- HC* .05 723 Turkey. Modern, small base coins. Good. ~~7~~ pcs.

NUMISMATIC BOOKS.

- 18-724 Crosby, S. S. Early Coins of America. Ten autotype plates, 4to, half morocco cloth. Boston. 1875. *act 1. Dish 6.50*
- Comp*
C 6.25 725 Doughty, F. W. Cents of The United States. Wood cuts. 8vo. Cloth. New York, 1890. *act 1. Bar 3.50*
- (SHC)
HC .20 726 Hawkins, Edward. Silver Coins of England. 8vo. Cloth. Binding loose as usual with badly bound books in England. Foxed. London. 1841.
- HC 1.10 727 Humphreys, H. N. Ancient Coins. Facsimile examples in relief in the metals countersunk in thick plates. The pages before and after the plates foxed as usual, otherwise fine copy. Embossed leather cover, chafed on edges and worn on top and bottom of back. Small 4to. London. 1850. *act 1.*
- HC .30 728 Same. Coinage of The British Empire. Review of the Art of Coinage, and with plates in the color of the metals to Queen Victoria. Small 4to. Cloth. London. 1854.
- HC .60 729 New York Coin and Stamp Company. Catalog of the Parmelee collection, priced. Portrait soiled. 8vo. Hf-bd. New York. 1890.
- HC .90 730 Hazlitt, W. C. The Coin Collector. Twelve plates. Brief review of ancient, foreign and English Coins. 8vo. Cloth. New York. 1896.
- HC 1.10 731 Martin, L. C., and C. Trubner. Current Gold and Silver Coins of All Countries. 26 embossed plates in the metals. 8vo. Half red calf. Full gilt edges, in linen case. London. 1863. *act 1.*

COIN CASES.

- 1.05 732 Flat trays. 12 $\frac{3}{8}$ by 8 in. with hinged tops, fastened by two hooks, covered with morocco cloth and lined with velvet, with depressions for coins. Two for Dollars, each holding 15; 3 for Half Dollars, each 24; 3 for Quarters or Cents, each holding 35. *8 pcs. act 1. Count. 16 Club. 25*
- Drawes*

